



OPERATION MANUAL (for printer and scanner)

DIGITAL MULTIFUNCTIONAL SYSTEM

	Page
• INTRODUCTION	1
• CONTENTS	2
• PRINT	3
• SCAN	12
• SYSTEM SETTINGS	23
• TROUBLESHOOTING	25
• SPECIFICATIONS	29

INTRODUCTION

This manual describes the printer and scanner functions of the digital multifunctional system.

Note

- For information on loading paper, replacing toner cartridges, clearing paper misfeeds, handling peripheral devices, and other copier-related information, please refer to "Operation manual (for general information and copier)" that accompanies the machine.
- For information on installing the drivers and software cited in this manual, please refer to the separate "Software setup guide".
- For information on the operating system, please refer to your operating system manual or the online Help function.
- The screen images and procedures that appear in this manual are mainly for Windows Vista. With other versions of Windows, some screen images may be different from those in this manual.
- The explanations in this manual are based on American English and the North American version of the software. Software for other countries and regions may vary slightly from the North American version.
- This manual refers to the Reversing single pass feeder as the "RSPF" and the Single pass feeder as the "SPF". Unless specific mention is made, both the RSPF and the SPF are referred to simply as "SPF".
- Where "MX-xxxx" appears in this manual, please substitute the name of your model for "xxxx".

In some regions the "System settings guide" cited in this manual is a separate manual, and in other regions the "System settings guide" is included in the "Operation manual (for general information and copier)".

The display screens, messages, and key names shown in the manual may differ from those on the actual machine due to product improvements and modifications.

CONTENTS

INTRODUCTION 1

1 PRINT

BASIC PRINTING 3

- IF THE TRAY RUNS OUT OF PAPER DURING PRINTING4
- PAUSING A PRINT JOB.....4
- WHEN "PAPER SOURCE" IS SET TO [AUTO SELECT].....4
- HOW [BYPASS TRAY] AND [BYPASS MANUAL] DIFFER IN THE "PAPER SOURCE" SETTINGS4

OPENING THE PRINTER DRIVER FROM THE [START] BUTTON 5

PRINTER DRIVER SETTINGS 6

- TWO-SIDED PRINTING (ONLY FOR MODELS THAT SUPPORT TWO-SIDED PRINTING)7
- PRINTING MULTIPLE PAGES ON ONE PAGE8
- FITTING THE PRINT IMAGE TO THE PAPER....9
- ROTATING THE PRINT IMAGE 180 DEGREES ...10
- PRINTING A WATERMARK10

OUTLINE OF THE PRINT STATUS WINDOW ... 11

2 SCAN

SCANNING OVERVIEW 12

SCANNING FROM A TWAIN-COMPLIANT APPLICATION 13

- SCANNER DRIVER SETTINGS15

SCANNING FROM A WIA-COMPLIANT APPLICATION (WINDOWS XP/Vista) 17

SCANNING FROM THE "SCANNER AND CAMERA WIZARD" (WINDOWS XP) 18

SCANNING USING THE KEYS ON THE MACHINE..... 20

BUTTON MANAGER..... 21

- BUTTON MANAGER SETTINGS22

3 SYSTEM SETTINGS

SYSTEM SETTINGS LIST 23

USING THE SYSTEM SETTINGS..... 24

4 TROUBLESHOOTING

TROUBLESHOOTING 25

- PRINTING PROBLEMS..... 25
- SCANNING PROBLEMS 27

5 SPECIFICATIONS

1

PRINT

This chapter explains the basic procedure for printing and how to select printer driver settings for various purposes.



Paper that can be used and the procedures for loading paper are the same as for copying. See the "Operation manual (for general information and copier)".

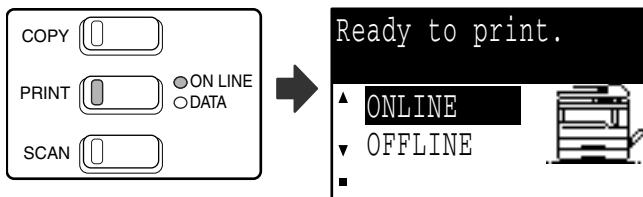
BASIC PRINTING

The following example explains how to print a document from WordPad.

Before printing, make sure that the correct size of paper for your document has been loaded in the machine.

1 Make sure that the ONLINE indicator on the operation panel is lit.

If the ONLINE indicator is not on, press the [PRINT] key to switch to printer mode and then use the [▲] key to select "ONLINE".



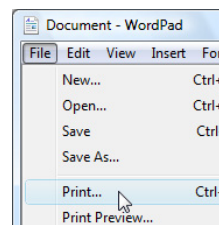
The status of the printer function is indicated by the ONLINE and DATA indicators above the [PRINT] key.

	ONLINE indicator	DATA indicator
Lit	The machine is online. Printing is possible.	There is print data in memory that has not been printed yet.
Blinking	A print job is being canceled.	Printing is in progress or data is being received.
Off	The machine is offline. Printing is not possible.	There is no print data in memory and print data is not being received.

2 Start WordPad and open the document that you wish to print.

3 Select [Print] from the application's [File] menu.

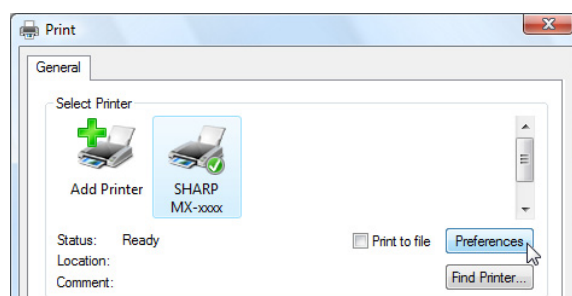
The "Print" dialog box will appear.



4 Make sure that "SHARP MX-xxxx" is selected as the printer.

If you need to change any print settings, click the [Preferences] button to open the printer driver setup screen.

The printer driver setup screen will appear.



Windows 2000 does not have the [Preferences] button in this dialog box. Select settings as needed on each of the tabs in the setup screen and click the [OK] button.

- [PRINTER DRIVER SETTINGS \(page 6\)](#),
- [TWO-SIDED PRINTING \(ONLY FOR MODELS THAT SUPPORT TWO-SIDED PRINTING\) \(page 7\)](#),
- [PRINTING MULTIPLE PAGES ON ONE PAGE \(page 8\)](#),
- [FITTING THE PRINT IMAGE TO THE PAPER \(page 9\)](#),
- [ROTATING THE PRINT IMAGE 180 DEGREES \(page 10\)](#),
- [PRINTING A WATERMARK \(page 10\)](#)

5 Click the [Print] button.

Printing begins. When printing begins, the Print Status Window automatically opens.

➤ [OUTLINE OF THE PRINT STATUS WINDOW \(page 11\)](#)

**When the job separator tray is installed**

The output tray can be selected when selecting print settings at the time of printing. To change the tray selection, select the desired tray in "Output" in the [Paper] tab of the printer driver setup screen.

IF THE TRAY RUNS OUT OF PAPER DURING PRINTING

Add paper to the tray that ran out or to the bypass tray. If you add paper to the bypass tray, press the [PRINT] key on the machine to switch to printer mode and select "BYPASS-TRAY". Printing will resume. Note that if the "AUTO TRAY SWITCHING" setting is selected in the "PAPER SIZE SET" (accessed by pressing the [SPECIAL FUNCTION] key) and there is the same size of paper in another tray, the machine will automatically switch to the other tray and continue printing.

PAUSING A PRINT JOB

To pause a print job, press the [PRINT] key on the machine to switch to printer mode and then select "OFFLINE" with the [▼] key. The machine pauses the print job and then goes offline.

- To cancel a print job, press the [C] key (□).
- To resume printing, select "ONLINE" with the [▲] key.

WHEN "PAPER SOURCE" IS SET TO [AUTO SELECT]

If "Paper Source" is set to [Auto Select] in the [Paper] tab of the printer driver setup screen and the correct size of paper for a print job is not loaded in the machine, the printing procedure will vary depending on the "FORCED OUTPUT OF PRINT" setting ([page 23](#)) in the system settings.

When "FORCED OUTPUT OF PRINT" is disabled

Add paper to the bypass tray, press the [PRINT] key on the machine to switch to printer mode, and select "BYPASS-TRAY". Printing will resume.

When "FORCED OUTPUT OF PRINT" is enabled

The closest size of paper in a tray other than the bypass tray will be used for printing.



If the print image is in a different orientation than the paper, the print image will be automatically rotated 90 degrees to enable correct printing on the paper. (Other than the bypass tray)

HOW [BYPASS TRAY] AND [BYPASS MANUAL] DIFFER IN THE "PAPER SOURCE" SETTINGS

There are two bypass tray settings in "Paper Source" in the [Paper] tab of the printer driver setup screen:

- When [Bypass Tray] is selected, the print job is automatically printed on the paper in the bypass tray.
- When [Bypass Manual] is selected, the print job is not printed until paper is inserted into the bypass tray. If paper is already in the bypass tray, remove the paper and then re-insert it to begin printing.

OPENING THE PRINTER DRIVER FROM THE [START] BUTTON

To change the printer driver settings, follow the steps below. Settings adjusted in this way will be the initial settings when you print from an application. (If you change the settings in the printer driver setup screen at the time of printing, the settings will revert to the initial settings when you quit the application.)

1 Click the [Start] button and select [Control Panel] and then select [Printer].

- In Windows XP, click the [start] button, and then click [Printers and Faxes].
- In Windows 2000, click the "Start" button and point to [Settings], and then select [Printers].



In Windows XP, if [Printers and Faxes] does not appear in the [start] menu, select [Control Panel], select [Printers and Other Hardware], and then select [Printers and Faxes].

2 Click the "SHARP MX-xxxx" printer driver icon.

3 Select [Properties] from the [Organize] menu.


In Windows XP/2000, select [Properties] from the [File] menu.

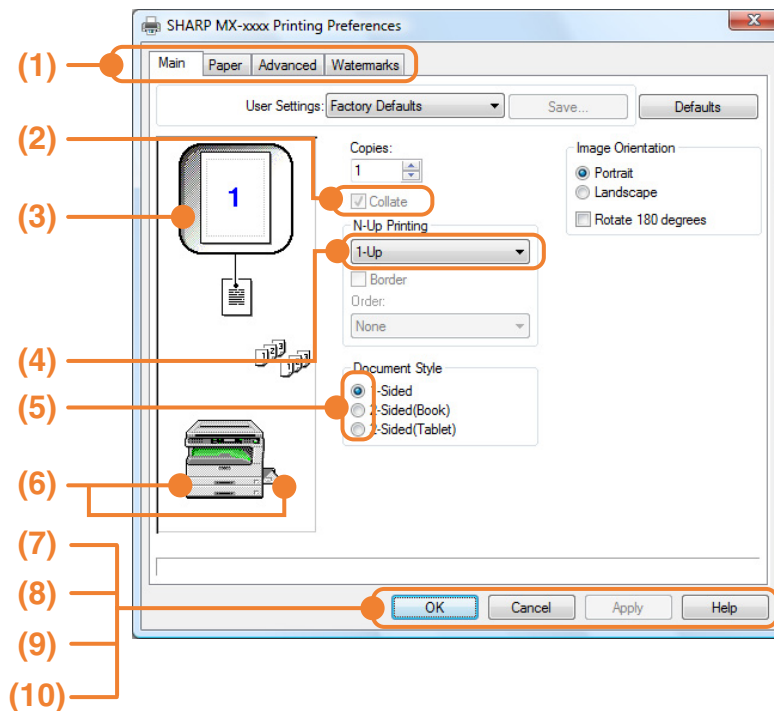
4 Click the [Printing Preferences] button in the [General] tab.

The printer driver setup screen will appear.

☛ [PRINTER DRIVER SETTINGS \(page 6\)](#)


PRINTER DRIVER SETTINGS

Some restrictions exist on the combinations of settings that can be selected in the printer driver setup screen. When a restriction is in effect, an information icon () will appear next to the setting. Click the icon to view an explanation of the restriction.




- (1) **Tab**
The settings are grouped on tabs. Click on a tab to bring it to the front.
- (2) **Checkbox**
Click on a checkbox to activate or deactivate a function.
- (3) **Print image**
This shows the effect of the selected print settings.
- (4) **Drop-down list**
Allows you to make a selection from a list of choices.
- (5) **Check button**
Allows you to select one item from a list of options.
- (6) **Image of paper trays**
The tray selected in "Paper Source" in the [Paper] tab appears in blue. You can also click on a tray to select it.

- (7) **[OK] button**
Click this button to save your settings and exit the dialog box.
- (8) **[Cancel] button**
Click this button to exit the dialog box without making any changes to the settings.
- (9) **[Apply] button**
Click to save your settings without closing the dialog box.

 **Note** The [Apply] button does not appear when you open this window from an application.

- (10) **[Help] button**
Click this button to display the help file for the printer driver.

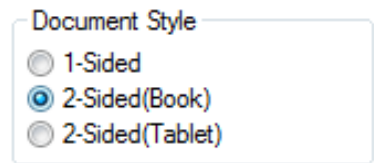
 **Note** The settings and the image of the machine will vary depending on the model. If a tray or job separator tray option is installed, see "CONFIGURING THE PRINTER DRIVER" in "3. TROUBLESHOOTING AND USEFUL INFORMATION" in the "Software setup guide" to configure the settings for the option.

TWO-SIDED PRINTING (ONLY FOR MODELS THAT SUPPORT TWO-SIDED PRINTING)

On models that have the two-sided printing function, both sides of the paper can be printed on.

To use this function, open the printer driver setup screen and select [2-Sided (Book)] or [2-Sided (Tablet)] from "Document Style" in the [Main] tab.

To open the printer driver, see ["BASIC PRINTING" \(page 3\)](#).



- Paper sizes that can be used for two-sided printing are Ledger, Letter, Legal, Foolscap, A3, A4, A5, B4 and B5.
- The bypass tray cannot be used for two-sided printing.

The following example shows the result when portrait data is printed on both sides of the paper.

Print data	Printing result	
	2-Sided (Book)	2-Sided (Tablet)
	<p>The pages are printed so that they can be bound at the side.</p>	<p>The pages are printed so that they can be bound at the top.</p>

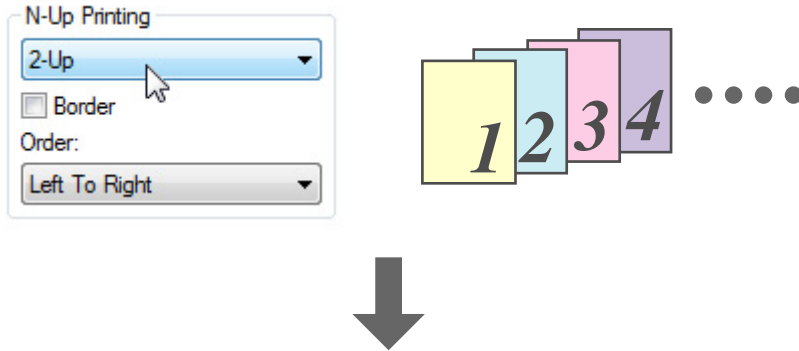
PRINTING MULTIPLE PAGES ON ONE PAGE

This feature allows you to reduce and print two, four or six document pages on a single sheet of paper. To use this function, open the printer driver setup screen and select the number of pages per sheet (2-Up, 4-Up or 6-Up) in "N-Up Printing" in the [Main] tab. The order of the pages can be changed in the "Order" menu. To open the printer driver, see ["BASIC PRINTING" \(page 3\)](#).



The "N-Up Printing" setting is not available when [Fit To Paper Size] is selected. [FITTING THE PRINT IMAGE TO THE PAPER \(page 9\)](#)

For example, when [2-Up], [4-Up] or [6-Up] is selected, the result will be as follows depending on the selected order.



N-Up	Left to Right	Right to Left
[2-Up]		

N-Up	Right, and Down	Down, and Right	Left, and Down	Down, and Left
[4-Up]				

N-Up	Right, and Down	Down, and Right	Left, and Down	Down, and Left
[6-Up]				

If you select the [Border] checkbox, borderlines will be printed around each page.



The order can be viewed in the print image in the printer driver setup screen. [PRINTER DRIVER SETTINGS \(page 6\)](#)

FITTING THE PRINT IMAGE TO THE PAPER

The printer driver can adjust the size of the print image to match the size of the paper loaded in the machine. Follow the steps shown below to use this function. The explanation below assumes that you intend to print a ledger or A3 size document on letter or A4 size paper.

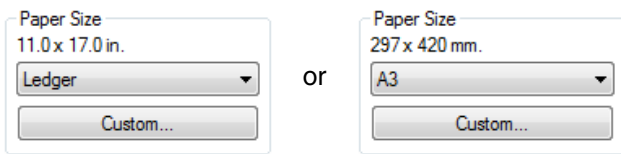
To open the printer driver, see ["BASIC PRINTING" \(page 3\)](#).



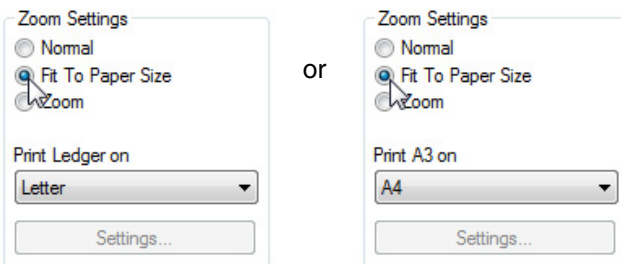
The "Fit To Paper Size" setting is not available when "N-Up Printing" is selected. [PRINTING MULTIPLE PAGES ON ONE PAGE \(page 8\)](#)

1 Click the [Paper] tab in the printer driver setup screen.

2 Select the original size (Ledger or A3) of the print image in "Paper Size".



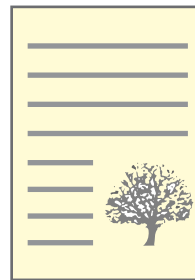
3 Select [Fit To Paper Size].



4 Select the size of the paper (Letter or A4) that is loaded in the machine from "Fit to Paper Size".

The size of the print image will be automatically adjusted to match the paper loaded in the machine.

Paper Size: Ledger or A3
Fit To Paper Size: Letter or A4



Ledger or A3 size document (Paper Size)




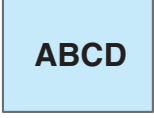
Letter or A4 size paper (Fit To Paper Size)

1

ROTATING THE PRINT IMAGE 180 DEGREES

The print image can be rotated 180 degrees. This feature rotates the print image 180 degrees to enable correct printing on paper that can only be loaded in one orientation. To use this function, select the image orientation in "Image Orientation" on the [Main] tab, and then click on the [Rotate 180 degrees] checkbox. To open the printer driver, see ["BASIC PRINTING" \(page 3\)](#).



Printing result	
<input checked="" type="radio"/> Landscape <input checked="" type="checkbox"/> Rotate 180 degrees	<input checked="" type="radio"/> Landscape <input type="checkbox"/> Rotate 180 degrees
	



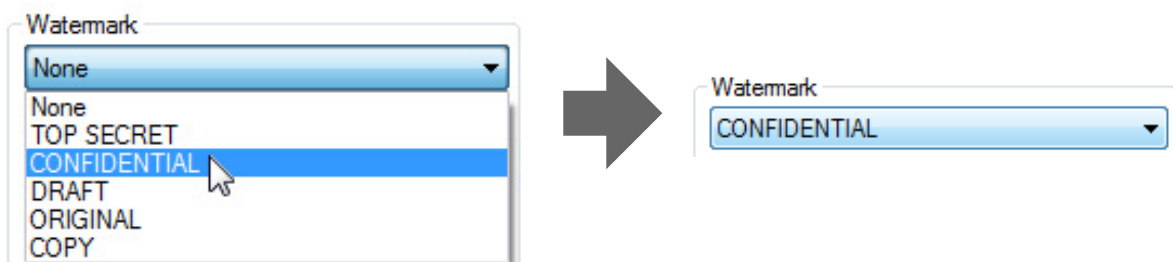
The procedure for loading paper is explained in the "Operation manual (for general information and copier)".

PRINTING A WATERMARK

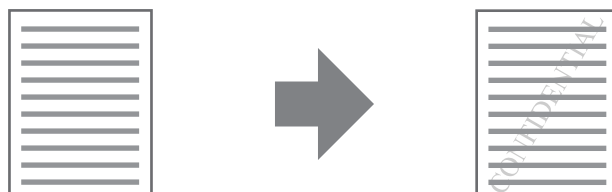
You can print a watermark such as "CONFIDENTIAL" on your document. To print a watermark, open the printer driver setup screen, click the [Watermarks] tab, and follow the steps below. To open the printer driver, see ["BASIC PRINTING" \(page 3\)](#).

How to Print a Watermark

From the "Watermark" drop-down list, select the watermark that you wish to print (for example "CONFIDENTIAL"), and start printing.



Print sample

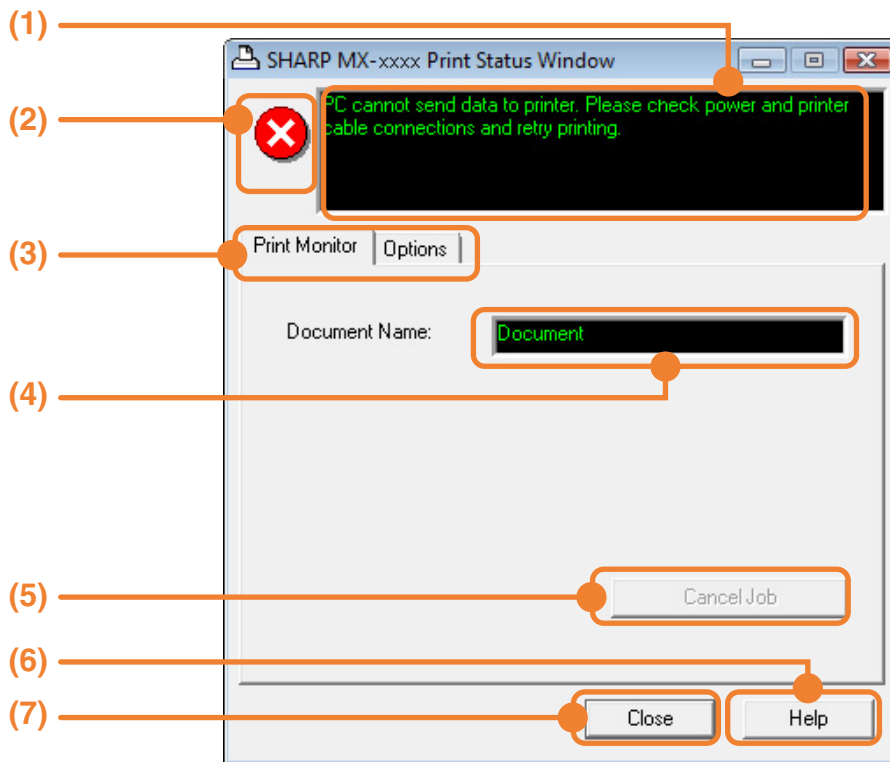


You can enter text to create your own custom watermark. For details on watermark settings, view printer driver Help.

 [PRINTER DRIVER SETTINGS \(page 6\)](#)

OUTLINE OF THE PRINT STATUS WINDOW



When printing begins, the Print Status Window automatically opens. The Print Status Window is a utility that monitors the machine and informs you of the name of the document being printed and any errors that occur.



1

- (1) **Status window**
Provides information on the current status of the printer.
- (2) **Status icons**
The status icons appear to alert you to printer errors. Nothing appears when printing is taking place normally. The icons are explained below. Follow the instructions in the status window to solve the problem.

- (5) **[Cancel Job] button**
Printing can be canceled by clicking this button before the machine receives the job.
- (6) **[Help] button**
Click this button to display the help file for the Print Status Window.
- (7) **[Close] button**
Click this button to close the Print Status Window.

Icon	Print Status
	An error has occurred that requires immediate attention.
	An error has occurred that requires attention soon.

- (3) **Tab**
Click a tab to bring it to the front. The [Options] tab allows you to select display options for the Print Status Window.
- (4) **Document Name**
Shows the name of the document currently being printed.

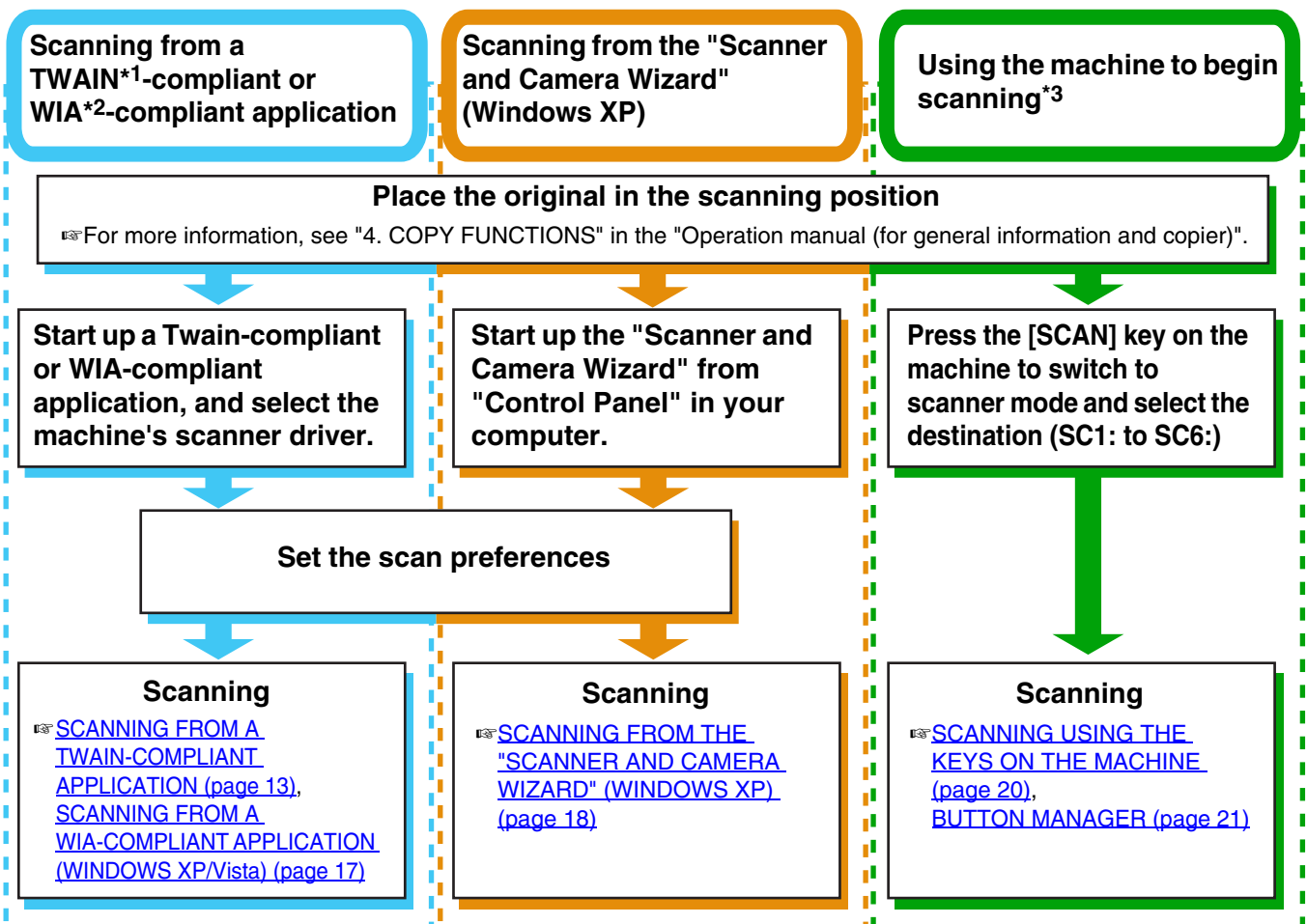
This chapter explains how to scan from a computer connected to the machine by a USB cable, and how to scan using the machine's operation panel.

SCANNING OVERVIEW

The flow chart shown below provides an overview of scanning.



The environment in which the machine's scanning function can be used is subject to certain limitations. For more information, see "1. INSTALLING THE SOFTWARE (THAT ACCOMPANIES THE MACHINE)" in the "Software setup guide".



*1 TWAIN is an international interface standard for scanners and other image acquisition devices. By installing a TWAIN driver on your computer, you can scan and work with images using a variety of TWAIN-compliant applications.

*2 WIA (Windows Imaging Acquisition) is a Windows function that allows a scanner, digital camera or other imaging device to communicate with an image processing application. The WIA driver for this machine can only be used in Windows XP/Vista.

*3 To begin scanning using the machine's operation panel, settings must be configured in the Control Panel after Button Manager is installed. For more information, see "SETTING UP BUTTON MANAGER" in "1. INSTALLING THE SOFTWARE (THAT ACCOMPANIES THE MACHINE)" in the "Software setup guide".

SCANNING FROM A TWAIN-COMPLIANT APPLICATION

The SHARP scanner driver is compatible with the TWAIN standard, allowing it to be used with a variety of TWAIN-compliant applications. The procedure for scanning from some applications may differ in places from the procedure below. For more information, refer to the manual or the help file of your application.

1 Place the original(s) that you wish to scan on the document glass or in the SPF.

For information on placing an original for scanning, see "4. COPY FUNCTIONS" in the "Operation manual (for general information and copier)".

2 Start up a Twain-compliant application and select [Select Scanner] from the [File] menu.

3 Select [SHARP MFP TWAIN W] and then click the [Select] button.



- If you are using Windows XP/Vista, you can also select [WIA-SHARP MX-xxxx] to scan using the WIA driver.
☞ [SCANNING FROM A WIA-COMPLIANT APPLICATION \(WINDOWS XP/Vista\) \(page 17\)](#)
- Depending on your system, [SHARP MFP TWAIN W 1.0 (32-32)] or [WIA-SHARP MX-xxxx 1.0 (32-32)] may appear in the above select source screen.

4 Select [Acquire Image] from the [File] menu.

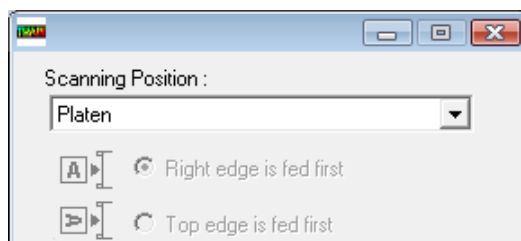
The scanner driver setup screen will appear.
☞ [SCANNER DRIVER SETTINGS \(page 15\)](#)

5 In the "Scanning Position" menu, select the location where you placed the original in Step 1.

- If you placed a one-sided original in the SPF, select [SPF (Simplex)].
- If you placed a two-sided original in the RSPF, select [SPF (Duplex-Book)] or [SPF (Duplex-Tablet)].



- If you selected [SPF (Duplex-Book)] or [SPF (Duplex-Tablet)] from the "Scan Position" menu, select [Right edge is fed first] or [Top edge is fed first] for the orientation of the original.
- For original sizes for which two-sided scanning is possible, see "REVERSING SINGLE PASS FEEDER / SINGLE PASS FEEDER" in "3. PERIPHERAL DEVICES AND SUPPLIES" in the "Operation manual (for general information and copier)".



6 Click the [Preview] button.

The preview image will appear.



- If the angle of the image is not correct, reset the original and click the [Preview] button again.
- If the preview image is not oriented correctly, click the [Rotate] button in the preview screen. This rotates the preview image 90 degrees clockwise, allowing you to correct the orientation without resetting the original.
☞ [Preview screen \(page 16\)](#)
- If you inserted multiple pages in the SPF, the machine previews only the top page of the originals and then sends it to the original exit area. Return the previewed original to the SPF before starting the scanning job.

7 Specify the scanning area and select the scan preferences.

For information on specifying the scan area and selecting the scan preferences, see scanner driver Help.

☞ [SCANNER DRIVER SETTINGS \(page 15\)](#)

⚠ Caution

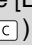

- Scanning a large area at high resolution results in a large quantity of data and a prolonged scanning time. When selecting the scan preferences, lower the resolution or specify a suitable scanning area.
- The scan resolution will vary depending on the scanning area and how much memory in the machine is free. For example, if a letter or A4 original is scanned in full color at 300 dpi with only the standard memory installed, the machine will scan the original in full color at 150 dpi and the scanner driver will enhance the resolution to 300 dpi.
- To scan a ledger or A3 original in full color at 600 dpi without using enhancement, the 256 MB memory option is required.

8 When you are ready to begin scanning, click the [Scan] button.

Scanning begins and the image is acquired into the application that you are using.

In the application, assign a file name and save the file.

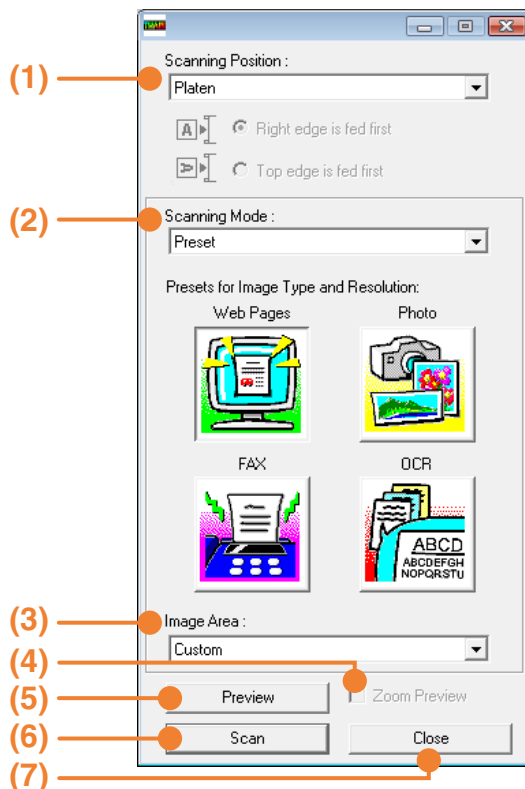
Note

To cancel a scanning job after the [Scan] button has been clicked, press the [Esc] key on your keyboard or the [C] key () or [CA] key () on the operation panel.

SCANNER DRIVER SETTINGS

The scanner driver setup screen consists of the "Set-up screen", which lets you select scan settings, and the "Preview screen", which shows the scanned image. For details on the scan settings, click the [Help] button in the preview screen to display Help.

Set-up Screen



(1) "Scanning Position" menu

("Scanning Source" in some regions)

Select the location where the original is placed. Selections are [Platen] (document glass), [SPF (Simplex)], [SPF (Duplex-Book)] or [SPF (Duplex-Tablet)].



On machines without an SPF, this setting is fixed at [Platen].

(2) "Scanning Mode" menu

Select "Preset" or "Custom Settings" ("Standard" or "Professional" in some regions) for the scanning mode.

The "Preset (or Standard)" screen lets you select the original type as well as monitor, photo, fax, or OCR according to the purpose of scanning.

If you wish to change the default settings for these four buttons, or select custom settings such as the image type and resolution before scanning, switch to the "Custom Settings (or Professional)" screen.

For details on the settings, click the [Help] button in the preview screen to display Help.

(3) "Image Area" menu

Set the scanning area. To scan the original size detected by the machine, select [Auto]. The scanning area can also be specified as desired in the preview window.

(4) [Zoom Preview] checkbox

When this is selected, the selected part of the preview image will be enlarged when the [Preview] button is clicked.

To return to the regular view, remove the checkmark.



[Zoom Preview] cannot be used when [SPF] is selected in the "Scanning Position" menu.

(5) [Preview] button

Previews the document.



If [Preview] is canceled by immediately pressing the [Esc] key on your keyboard, or the [C] key (C) or [CA] key (CA) on the machine, nothing will appear in the preview screen.

(6) [Scan] button ([Scanning] in some regions)

Click to scan an original using the selected settings. Before clicking the [Scan] button, make sure the settings are correct.

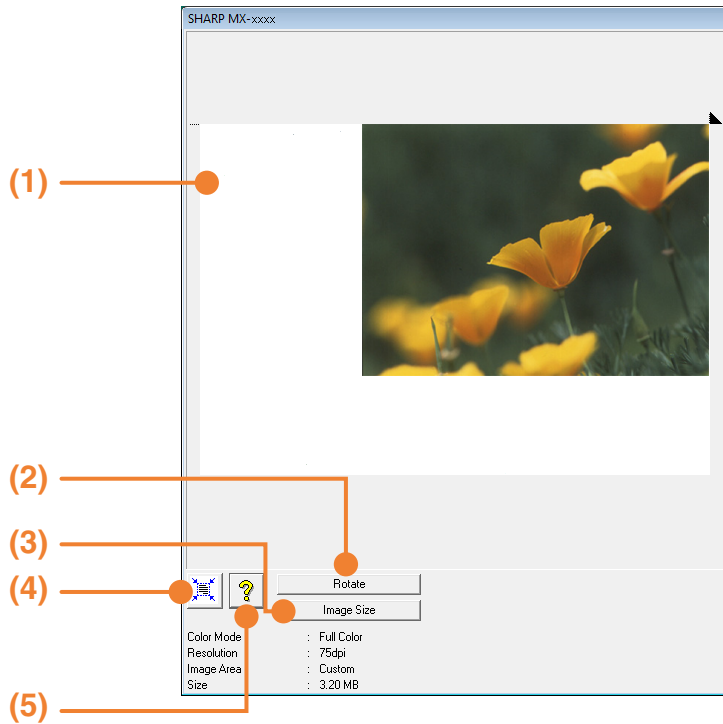


To cancel a scanning job after the [Scan] button is clicked, press the [Esc] key on your keyboard or the [C] key (C) or [CA] key (CA) on the machine.

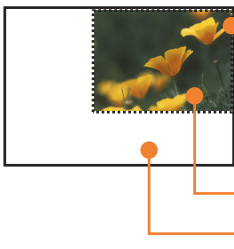
(7) [Close] button

Click to close the scanner driver setup screen.

Preview screen



- (1) **Preview window**
Click the [Preview] button in the Set-up screen to display the scanned image. You can specify the scanning area by dragging the mouse inside the window. The inside of the frame that appears when you drag the mouse will be the scanning area. To cancel a specified scanning area and clear the frame, click anywhere outside the frame.
- (2) **[Rotate] button**
Click to rotate the preview image 90 degrees clockwise. This allows the orientation to be corrected without resetting the original. Upon scanning, the image file is created in the orientation shown in the preview window.
- (3) **[Image Size] button**
Click this button to open a dialog box that allows you to specify the scanning area by entering numbers. Pixels, mm, or inches can be selected for the units of the numbers. By initially specifying a scanning area, numbers can be entered to change that area relative to the top left corner as a fixed origin.

- (4) **[Auto Scan Area Adjustment] button ([Auto Scan Area Judgement] in some regions)**
Click this button when the preview screen is displayed to automatically set the scanning area to the entire preview image.

- (5) **[Help] button**
Click to display the help file for the scanner driver.

SCANNING FROM A WIA-COMPLIANT APPLICATION (WINDOWS XP/Vista)

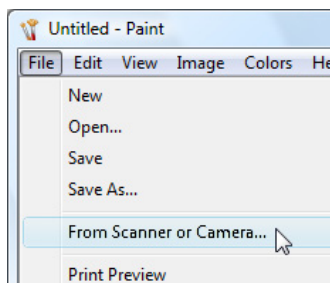
If you are using Windows XP/Vista, you can use the WIA driver to scan from Paint and other WIA-compliant applications. The procedure for scanning using Paint is explained in the following.

1 Place the original(s) that you wish to scan on the document glass or in the SPF.

For information on placing an original for scanning, see "4. COPY FUNCTIONS" in the "Operation manual (for general information and copier)".

2 Start Paint and then select [From Scanner or Camera] from the [File] menu.

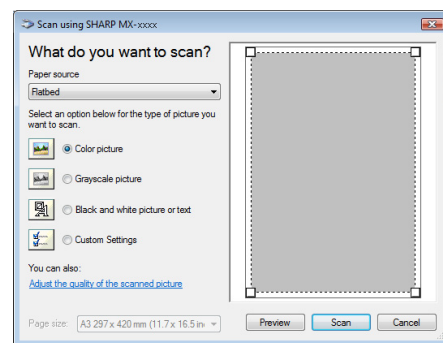
The scan screen of the WIA driver will appear.



If you have WIA drivers for other devices installed on your computer, the "Select Device" screen will open. Select [SHARP MX-xxxx] and click the [OK] button.

3 Select the paper source and picture type, and click the [Preview] button.

- The preview image will appear.
- If you placed the original on the document glass, select [Flatbed] for the "Paper source".
- If you placed the original in the SPF, select [Document Feeder] for the "Paper source" and specify the original size in "Page size".



- If an SPF is not installed on your machine, the "Paper source" menu will not appear.
- If you select [Document Feeder] for the "Paper source" and click the [Preview] button, the top original in the SPF is previewed. The previewed original is sent to the original exit area, so you will need to return it to the SPF before starting the scanning job.

4 Click the [Scan] button.

- Scanning begins and the image is acquired into Paint.
- Use [Save] in your application to select a file name and folder for the scanned image, and save the image.
- To cancel scanning after the [Scan] button has been clicked, click the [Cancel] button or press the [C] key (C) or [CA] key (CA) on the machine operation panel.

2

SCANNING FROM THE "SCANNER AND CAMERA WIZARD" (WINDOWS XP)

The procedure for scanning with the "Scanner and Camera Wizard" in Windows XP is explained here. The "Scanner and Camera Wizard" lets you scan an image without using a TWAIN-compliant or WIA-compliant application.

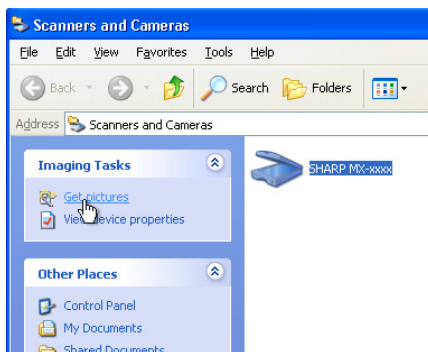
1 Place the original(s) that you wish to scan on the document glass or in the SPF.

For information on placing an original for scanning, see "4. COPY FUNCTIONS" in the "Operation manual (for general information and copier)".

2 Click the [start] button, the [Control Panel], [Printers and Other Hardware], and then [Scanners and Cameras].

3 Click the [SHARP MX-xxxx] icon and then click [Get pictures] in [Imaging Tasks].

The "Scanner and Camera Wizard" will appear.

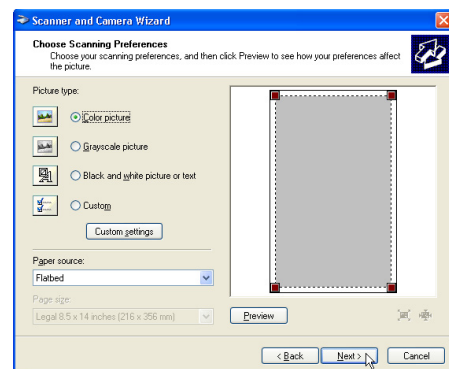


4 Click the [Next] button.



5 Select the "Picture type" and "Paper source", and click the [Next] button.

- If you placed the original on the document glass, select [Flatbed] for the "Paper source".
- If you placed the original in the SPF, select [Document Feeder] for the "Paper source" and specify the original size in "Page size".
- You can click the [Preview] button to display the preview image.

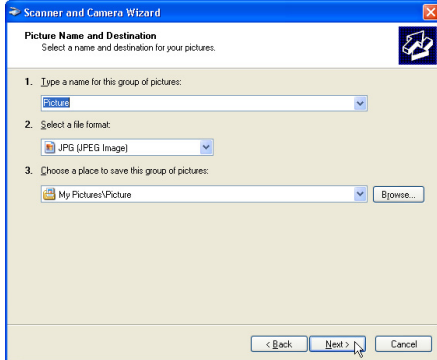


Note

- If an SPF is not installed on your machine, the "Paper source" menu will not appear.
- If you select [Document Feeder] for the "Paper source" and click the [Preview] button, the top original in the SPF is previewed. The previewed original is sent to the original exit area, so you will need to return it to the SPF before starting the scanning job.
- To adjust the resolution, picture type, brightness and contrast settings, click the [Custom settings] button.

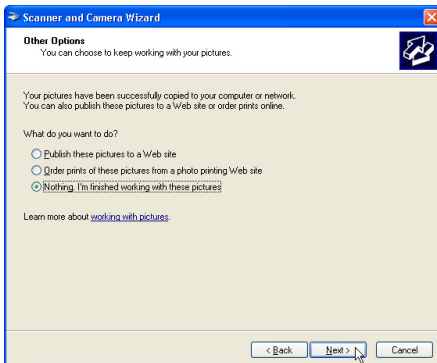
6 Specify a group name, format and folder for saving the image, and then click the [Next] button.

JPG, BMP, TIF or PNG can be selected for the format. To begin scanning, click the [Next] button.



7 When scanning ends, the following screen will appear. Select the next task you wish to perform and then click the [Next] button.

If you are ready to end the session, click [Nothing, I'm finished working with these pictures].



8 Click the [Finish] button.

The "Scanner and Camera Wizard" closes and the scanned image is saved in the specified folder.



SCANNING USING THE KEYS ON THE MACHINE

The procedure for scanning using the [SCAN] key is explained in the following. When scanning is performed by this method, the previously specified application will automatically start and the scanned image will be acquired into the application.

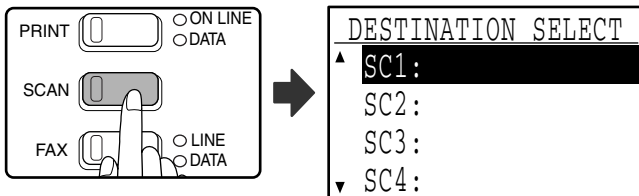


- Scanner mode cannot be used in the following situations:
 - A problem has occurred in the machine such as a paper misfeed or an open cover.
 - The system settings are being used.
 - The tray paper size is being set.
 - During copying or printing
 - During scanning of an original for a fax transmission (when the fax option is installed)
- If the machine is in copy mode, press the [SCAN] key to switch to scanner mode and clear the previously set copy settings.

1 Place the original(s) that you wish to scan on the document glass or in the SPF.

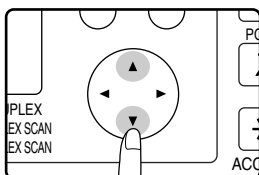
For information on how to place the original, see "4. COPY FUNCTIONS" in the "Operation manual (for general information and copier)".

2 Press the [SCAN] key.



The [SCAN] key indicator lights up to indicate that the machine is in scanner mode and the destination selection screen appears in the display. A name can be entered in Button Manager for each of the destinations "SC1:" to "SC6:", which will appear in the format "SC1:XXXXX".

3 Use the [▼] or [▲] key to select the desired scan destination.

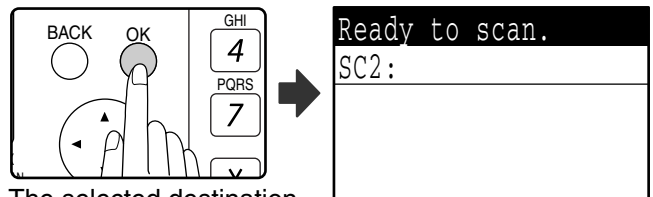


The following applications have been set at the factory for each of the scan destinations 1 to 6.

If you wish to change a setting, see "[BUTTON MANAGER SETTINGS](#)" (page 22).

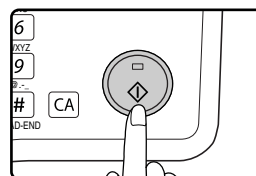
Scan Destination	Application that starts
SC1:	Sharpdesk
SC2:	Email
SC3:	FAX
SC4:	OCR
SC5:	Microsoft Word
SC6:	Filing

4 Press the [OK] key.



The selected destination appears.

5 Press the [START] key.



Scanning begins.




- The [COPY] key, [PRINT] key, or [FAX] key can be pressed in scanner mode to switch to the corresponding mode.
- For restrictions on using copy, printer, or fax mode while in scanner mode, or using scanner mode while in copy, printer, or fax mode, see "OPERATION IN COPY, PRINT, SCAN, AND FAX MODES" in "1. BEFORE USING THE PRODUCT" in the "Operation manual (for general information and copier)".

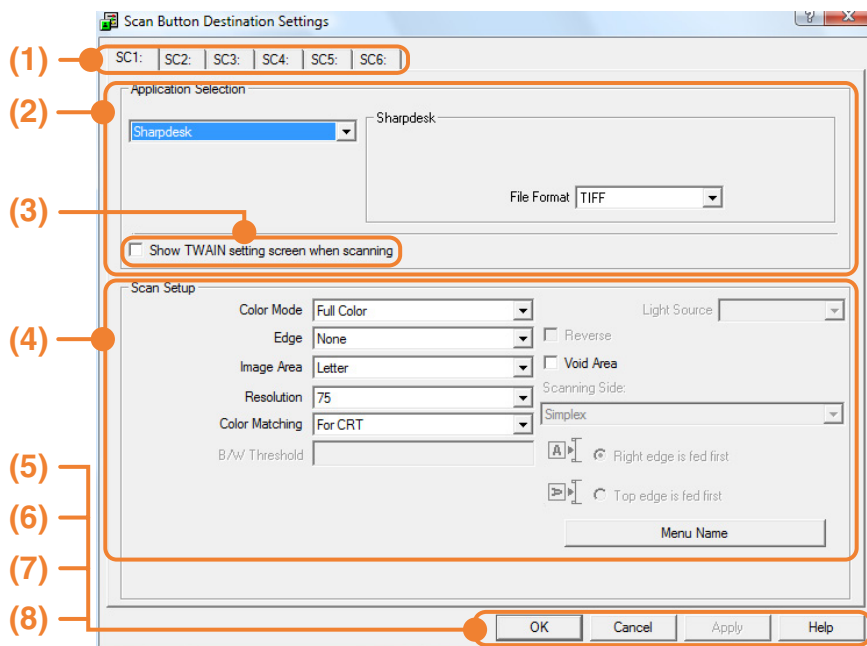
BUTTON MANAGER

Button Manager is a software utility that allows the scanner function to be used by means of the [SCAN] key on the machine. The Button Manager software allows you to assign a destination application and scan settings to each of the six destinations on the machine.

To scan using the machine's operation panel, settings must be configured in the Control Panel after Button Manager is installed. To install Button Manager and configure settings, see "SETTING UP BUTTON MANAGER" in "1. INSTALLING THE SOFTWARE (THAT ACCOMPANIES THE MACHINE)" in the "Software setup guide".

Setup window

To view Help for a setting, click the  button in the upper right-hand corner of the Button Manager setup window (Scan Button Destination Settings screen) and then click the setting.



- (1) **Tab**
Select the desired destination. The tabs contain scan settings for each of the scan destinations (SC1 through SC6) on the machine.
- (2) **"Application Selection" area**
Select the application that starts up here.
- (3) **[Show TWAIN setting screen when scanning] checkbox**
Select whether or not the TWAIN screen is shown when scanning. When the checkbox is selected, the TWAIN screen appears when scanning is executed to let you adjust the scanning conditions.
- (4) **"Scan Setup" area**
Set the scan conditions.
- (5) **[OK] button**
Click to save your settings and close the dialog box.
- (6) **[Cancel] button**
Click this button to close the dialog box without making any changes to the settings.
- (7) **[Apply] button**
Click to save your settings without closing the dialog box.
- (8) **[Help] button**
Click this button to display the help file for Button Manager.

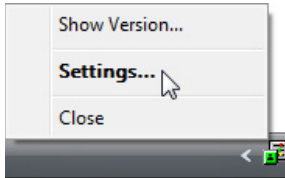
The scan settings for each of the six destinations can be changed in Button Manager. To change the settings, see ["BUTTON MANAGER SETTINGS" \(page 22\)](#).

BUTTON MANAGER SETTINGS

If you need to configure Button Manager settings, follow the steps below. For details on Button Manager settings, see Button Manager Help. [\(page 21\)](#)

1 Right-click the Button Manager icon () on the task bar and select [Settings] from the pop-up menu.

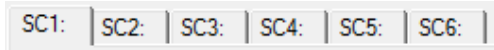
The Button Manager settings will open.



Note

If the Button Manager icon does not appear on the task bar, click the [start] button, select [All Programs] ([Programs] in Windows 2000), select [Sharp Button Manager W], and then click [Button Manager] to start Button Manager. The Button Manager icon appears on the task bar.

2 Click the tab that you wish to configure.



3 Set up the start-up application in the "Application Selection" area.

Note

- If the [Show TWAIN setting screen when scanning] checkbox is selected, the setting screen will appear when scanning is executed to let you adjust the scanning conditions.
- If an application other than [FAX] is selected, you can select the "File format" of the scanned image. If [PDF] is selected for the file format, the image quality may be slightly degraded.

4 Select scanning conditions such as "Color Mode" and "Scanning Side" in the "Scan Setup" area.

- If you placed a two-sided original in the RSPF, select [Duplex-Book] or [Duplex-Tablet] as appropriate for the position of the binding on the original.
- The name of the tab can be changed. Click the [Menu Name] button and enter a new name. After entering a name, click the [Apply] button or [OK] button. This also changes the scan destination name that appears on the machine. (Example: SC1: XXXXX)

Note

- If you selected [Duplex-Book] or [Duplex-Tablet] from the "Scanning Side" menu, select "Right edge is fed first" or "Top edge is fed first" for the orientation of the original.
- For original sizes for which two-sided scanning is possible, see "REVERSING SINGLE PASS FEEDER / SINGLE PASS FEEDER" in "3. PERIPHERAL DEVICES AND SUPPLIES" in the "Operation manual (for general information and copier)".
- Some settings cannot be selected in some applications.
- When [Show TWAIN setting screen when scanning] is selected, only [Menu name] can be selected.

5 Click the [OK] button.

This completes the settings.

3

SYSTEM SETTINGS

The system settings allow the administrator of the machine to enable and disable functions to suit the needs of the workplace. This chapter explains system settings for the printer and scanner functions. For system settings that are common to all modes, see the "System settings guide".

For the initial administrator password set at the factory, see "PROGRAMMING AN ADMINISTRATOR PASSWORD" in the "System settings guide".

SYSTEM SETTINGS LIST

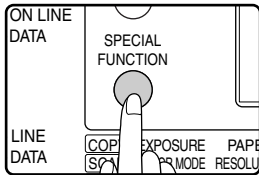
The system settings for the printer and scanner functions are shown in the following table. Factory default settings are indicated in bold. When "ENABLE, DISABLE" appears in the "Settings" column of a program, the program is enabled by pressing the [OK] key so that a checkmark appears in the checkbox. A checkmark in the checkbox () indicates that "ENABLE" is selected. No checkmark () indicates that "DISABLE" is selected.

Mode	System settings	Settings	Explanation
Printer	NOTICE PAGE	ENABLE, DISABLE	Select whether or not a Notice Page is printed when printing is not successful due to a memory full (or other) error.
	FORCED OUTPUT OF PRINT	ENABLE, DISABLE	When no tray has the specified size of paper, this setting is used to select whether or not the print job will be printed on the closest size of paper.
Scanner	DISABLE USB SCAN	YES, NO	Select whether or not scanning from a computer and scanning from the machine are disabled. When "YES" is selected, USB scanning is disabled.

USING THE SYSTEM SETTINGS

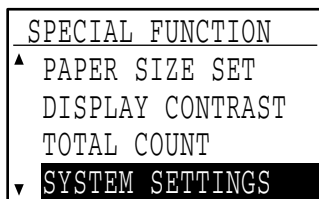
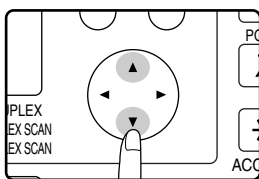
Follow the steps below to access the system settings for the printer and scanner functions.

1 Press the [SPECIAL FUNCTION] key.

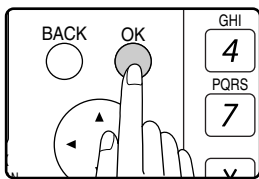


The special function screen appears.

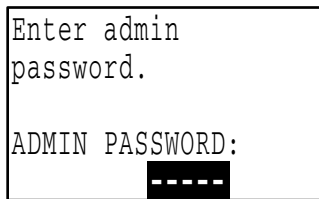
2 Select "SYSTEM SETTINGS" with the [▼] or [▲] key.



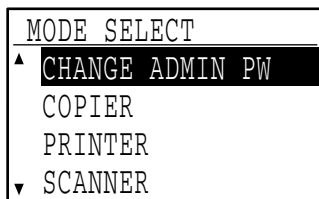
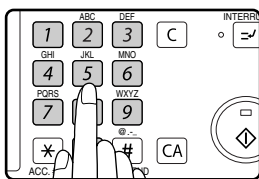
3 Press the [OK] key.



The administrator password entry screen will appear.

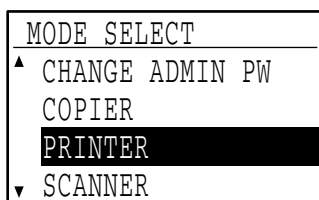
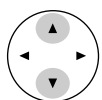


4 Use the numeric keys to enter the administrator password.

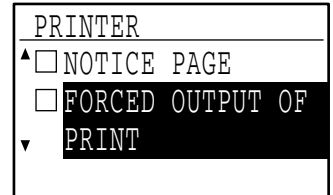


- "✖" will appear for each digit entered.
- The mode selection screen will appear.

5 Select the desired mode with the [▼] or [▲] key.



6 Press the [OK] key.



The settings of the selected mode will appear.

Example: The above screen shows the settings when printer mode is selected.

7 Select the desired program with the [▼] or [▲] key.



- A checkbox appears to the left of several of the programs. To enable a function (make a checkmark appear), press the [OK] key. To cancel a selection, press the [OK] key once again to remove the checkmark and disable the function. Go to step 9.
- When the [OK] key is pressed for a program that does not have a checkbox, the settings for the program appear.

8 Press the [OK] key and follow the instructions in the program screen.



9 To use another program for the same mode, select the desired program with the [▼] or [▲] key.

To use a program for a different mode, press the [BACK] key and select the desired mode. To exit the system settings, press the [CA] key (CA).

4

TROUBLESHOOTING

TROUBLESHOOTING

This chapter explains what to do if you encounter a problem while printing or scanning. For problems related to the machine such as running out of paper or paper misfeeds, see the "Operation manual (for general information and copier)".

Troubleshooting information can also be found in the README files for each of the software programs. To view a README file, see "1. INSTALLING THE SOFTWARE (THAT ACCOMPANIES THE MACHINE)" in the "Software setup guide".

PRINTING PROBLEMS

Problem	Cause and solution	Page
Print jobs are not received. (DATA indicator does not blink.)	The machine is set to off-line mode. → Press the [PRINT] key to select printer mode and then select "ON LINE" with the [▲] key.	3
	The machine is not selected correctly in the application from which you are printing. → In the dialog box that appears after you select [Print] from the [File] menu in the application, make sure you have selected the machine as the printer.	3
	Copying or scanning is in progress, or a fax is being printed (when the fax option is installed). → Wait until copying, scanning, or fax printing is finished.	—
	Has the printer driver been installed correctly? → Follow these steps to check and see if the printer driver is installed. 1 Click the [Start] button, click [Control Panel], and then click [Printer]. In Windows XP, click the [start] button, and then click [Printer and Faxes]. In Windows 2000, click the [Start] button, select [Settings] and then click [Printers]. 2 If the "SHARP MX-xxxx" printer driver icon is shown but you still cannot print, the printer driver may not have been installed correctly. In this case, delete the software and then reinstall it.	5
		Software setup guide
	The machine is not correctly connected with your computer. → Check both ends of the printer cable and make sure you have a solid connection. For information on cables, see " SPECIFICATIONS " (page 29).	29
	The port setting is not correct. → Printing is not possible if the printer driver port setting is not correct. Set the port correctly.	Software setup guide
	Printing is disabled. → If "CANCEL JOBS OF INVALID ACCOUNTS" is enabled in the system settings, printing will not be possible. Consult the administrator.	System settings guide

Problem	Cause and solution	Page
A Notice Page (NP-001) has been printed, but the print data has not been printed completely.	<p>A print job containing more data than can be held in the print memory is sent to the machine.</p> <p>→ Disable the ROPM function on the [Configuration] tab of the printer driver setup screen. If you need to use the ROPM function, divide the pages of the print data into two or more print jobs.</p> <p>→ The memory allocated to the printer function can be changed in the system setting "MEM. FOR PRINTER".</p>	System settings guide
Printing does not take place (DATA indicator is blinking.)	<p>There is no paper in the specified tray.</p> <p>→ Load paper in the tray.</p>	Operation manual (for general information and copier)
	<p>"FORCED OUTPUT OF PRINT" is disabled.</p> <p>→ Add paper to the bypass tray, press the [PRINT] key on the machine to switch to printer mode, and then select "BYPASS-TRAY". Printing will resume.</p>	4
Printing is slow.	<p>Simultaneous use of two or more application software programs.</p> <p>→ Start printing after quitting all unused application software programs.</p>	—
The printed image is light and uneven.	<p>The paper is loaded so that printing takes place on the back side of the paper.</p> <p>→ Some types of paper have a front and a back side. If the paper is loaded so that printing takes place on the back side, toner will not adhere well to the paper and a good image will not be obtained.</p>	—
The printed image is dirty.	<p>You are using paper that is outside the specified size and weight range.</p> <p>→ Use paper within the specified range.</p>	Operation manual (for general information and copier)
	<p>The paper is curled or damp.</p> <p>→ Replace the paper. During periods when the machine is not used for a long time, remove the paper from the tray and store it in a dark place in a bag to prevent moisture absorption.</p>	Operation manual (for general information and copier)
	<p>You did not set sufficient margins in the paper settings of your application.</p> <p>→ The top and bottom of the paper may be dirty if the margins are set outside of the specified print quality area.</p> <p>→ Set the margins within the specified print quality area.</p>	—
The printed image is skewed or it runs off the paper.	<p>The paper size set in the printer driver is not the same as the paper size loaded in the tray.</p> <p>→ Make sure that the paper size setting matches the size of the paper loaded in the tray. If the [Fit to Page] setting is selected, make sure that the paper size selected in the "Fit To Paper Size" drop-down list is the same as the size of the paper loaded in the tray.</p>	6
	<p>The image orientation setting in the printer driver is not correct.</p> <p>→ Click the [Paper] tab in the printer driver setup screen and make sure the "Image Orientation" setting is correct.</p>	6
	<p>Paper is not loaded properly.</p> <p>→ Make sure the paper is properly loaded.</p>	Operation manual (for general information and copier)
	<p>The margins are not set correctly in the application.</p> <p>→ Check the paper size and margin settings in the application. Also make sure that the print settings are correct for the paper size.</p>	—

SCANNING PROBLEMS

Problem	Cause and solution	Page
Poor scanning quality.	The document glass or the underside of the document cover/SPF is dirty. → Clean regularly.	Operation manual (for general information and copier)
	The original is smudged or blotchy. → Use a clean original.	–
	You have not specified a suitable resolution. → Make sure that the resolution setting in the scanner driver is appropriate for the original.	15
	You are scanning a large area (for example an entire 11" x 17" or A3 document) at high resolution. → If you attempt to scan a large area at high resolution and there is insufficient memory in the machine to hold the scanned data, scanning will take place at a lower resolution and the scanner driver will enhance the data to make up for the lower resolution. However, the quality of the enhanced image will not be as high as if scanning took place at the higher resolution. To scan a ledger or A3 original in full color at 600 dpi without using enhancement, the 256 MB memory option is required.	14
	You have not specified a suitable value for the "B/W Threshold" setting. → If you are using a TWAIN-compliant application and are using [White], [Red], [Green], or [Blue] for "Light Source" in the TWAIN driver, make sure that the "B/W Threshold" setting is appropriate. A larger threshold value makes your output darker, while a small threshold value makes it lighter. To adjust the threshold automatically, click the [Auto Threshold] button on the [Image] tab of the "Custom Settings (or Professional)" screen.	–
Poor scanning quality.	The brightness and contrast settings are not suitable. → If you are scanning with a TWAIN-compliant application and the resulting image has unsuitable brightness or contrast (for example it is too bright), click the [Auto Brightness/Contrast Adjustment] button on the [Color] tab of the "Custom Settings (or Professional)" screen. You can also click the [Brightness/Contrast] button to adjust the brightness and the contrast while viewing the scanned output image on the screen. If you are scanning with a WIA-compliant application or the "Scanner and Camera Wizard", click [Adjust the quality of the scanned picture] or the [Custom settings] button and adjust the brightness and contrast.	–
	[Quick Scan] has been selected. → If scanning is performed when [Quick Scan] has been selected in the [Preference] tab of the "Custom Settings (or Professional)" of the TWAIN driver, image quality may be degraded. This is because the scanned data is transferred using JPEG compression. If image quality is poor, then perform scanning again without selecting the [Quick Scan] option. (By default [Quick Scan] is not selected.)	15
	The original is not placed face up in the SPF or face down on the document glass. → Place the original face up in the SPF or face down on the document glass.	Operation manual (for general information and copier)
	The original was not placed in the correct position. → Place the original correctly.	Operation manual (for general information and copier)

Problem	Cause and solution	Page
Unable to scan the image.	If scanning is not possible, shut down your computer, turn off the machine's power switch, and unplug the machine's power cord. Next, start your computer, restore power to the machine, and try scanning again. If scanning is still not possible, check the following items.	–
	Your application is not TWAIN/WIA compliant. → If your application is not TWAIN/WIA compliant, scanning will not be possible. Make sure your application is TWAIN/WIA compliant.	–
	You have not selected the scanner driver of the machine in your application. → Make sure that the machine's scanner driver is selected in your TWAIN/WIA-compliant application.	13
	You have not specified all scanning preferences appropriately. → Scanning a large area at high resolution results in a large quantity of data and a prolonged scanning time. When selecting the scan preferences, lower the resolution or specify a suitable scanning area.	14
	"DISABLE USB SCAN" has been enabled in the system settings. → Consult the administrator.	23
Scanner transfer speed is slow.	Make sure that your computer meets the system requirements for the USB 2.0 interface (Hi-Speed mode). → Make sure that "USB2.0 MODE" described in the "System settings guide" is set to "HI-SPEED".	System settings guide

5

SPECIFICATIONS

Printer specifications

Printing speed*	MX-M200D: 20 pages/min, MX-M160D/MX-M160: 16 pages/min	
Resolution	600 dpi	
Memory	Page memory	MX-M200D/MX-M160D: 32 MB, MX-M160: 16 MB
	IMC Memory	16 MB
Emulation	SPLC (Sharp Printer Language with Compression)	
Memory expansion	256 MB expansion memory board (AR-SM5) can be installed in one DIMM expansion slot	
Interface port	USB 2.0 port	
Interface cables	[USB cable] Shielded twisted pair cable (max. length 10 feet (3 m)) Please purchase a commercially available USB cable.	

* Print speed during printing of the second sheet and following sheets when using 8-1/2" x 11" (A4) plain paper and performing continuous one-sided printing of the same page; excluding use of offset output.

Scanner specifications

Type	Flatbed color scanner
Scanning method	Document glass / SPF / RSPF
Light source	Cold cathode fluorescent lamp
Resolution*	Basic: 600 dpi x 600 dpi Setting range: 50 dpi - 9600 dpi
Original types	Sheet media, books
Effective scanning area	11-45/64" (297 mm) (Lengthwise) x 17" (431 mm) (Width)
Scanning speed	Color / Black and White (light source color selected): 2.88 msec/line Grayscale / Black and White: 0.96 msec/line
Scanning colors	Black and white 2 value Grayscale Full Color
Protocol	TWAIN / WIA (Windows XP/Vista) / STI
Interface port	USB 2.0 port
Drop out color	Yes
Supported operating systems	Windows 2000/XP/Vista (For more information, see "1. INSTALLING THE SOFTWARE (THAT ACCOMPANIES THE MACHINE)" in the "Software setup guide".)
Void area	Top and bottom edges 7/64" (2.5 mm), right and left edges 1/8" (3.0 mm) (at the periphery of the machine's maximum scanning area)
Interface cables	[USB cable] Shielded twisted pair cable (max. length 10 feet (3 m)) Please purchase a commercially available USB cable.

* The resolution may be enhanced by the scanner driver depending on the scanned area and resolution.



As a part of our policy of continuous improvement, SHARP reserves the right to make design and specification changes for product improvement without prior notice.

SHARP[®]

SHARP CORPORATION