



## SOFTWARE SETUP GUIDE

### DIGITAL MULTIFUNCTIONAL SYSTEM

	Page
• INTRODUCTION .....	1
• CONTENTS .....	5
• INSTALLING THE SOFTWARE (THAT ACCOMPANIES THE MACHINE) .....	6
• INSTALLING THE SOFTWARE (FOR OPTIONS) .....	13
• TROUBLESHOOTING .....	29

## Please note

---

- The explanations in this manual assume that you have a working knowledge of your Windows or Macintosh computer.
- For information on your operating system, please refer to your operating system manual or the online Help function.
- The explanations of screens and procedures in this manual are primarily for Windows Vista® in Windows® environments, and Mac OS X v10.4 in Macintosh environments. The screens may vary depending on the version of the operating system.
- Wherever "MX-xxxx" appears in this manual, please substitute your model name for "xxxx".
- This manual contains references to the fax function. However, please note that the fax function is not available in some countries and regions.
- Considerable care has been taken in preparing this manual. If you have any comments or concerns about the manual, please contact your dealer or nearest authorised service representative.
- This product has undergone strict quality control and inspection procedures. In the unlikely event that a defect or other problem is discovered, please contact your dealer or nearest authorised service representative.
- Aside from instances provided for by law, SHARP is not responsible for failures occurring during the use of the product or its options, or failures due to incorrect operation of the product and its options, or other failures, or for any damage that occurs due to use of the product.

## Warning

---

- Reproduction, adaptation or translation of the contents of the manual without prior written permission is prohibited, except as allowed under copyright laws.
- All information in this manual is subject to change without notice.

The display screens, messages, and key names shown in the manual may differ from those on the actual machine due to product improvements and modifications.

## SOFTWARE LICENSE

The SOFTWARE LICENSE will appear when you install the software from the CD-ROM. By using all or any portion of the software on the CD-ROM or in the machine, you are agreeing to be bound by the terms of the SOFTWARE LICENSE.

---

---

# INTRODUCTION

Thank you for purchasing this product. This manual explains how to install the printer driver and utilities that are required for the printer and scanner functions.

The optional network expansion kit (MX-NB10) enables the machine to be used as a network scanner and network printer. The optional PS3 expansion kit (MX-PK10) enables the machine to be used as a PostScript compatible printer. When the machine is used as a PostScript printer, printing is possible in both a Windows and a Macintosh environment. Note that printing in a Macintosh environment is only possible via a network connection. (USB ports cannot be used in a Macintosh environment.)



Where "MX-xxxx" appears in this manual, please substitute the name of your model for "xxxx". For the name of the model that you are using, see "PRODUCT CONFIGURATIONS" in the "Operation manual (for general information and copier)".

## Software setup guide (this manual)

Explains the procedures for installing the software in the "Software" CD-ROMs that accompany the machine and the optional network expansion kit (MX-NB10).

To use the machine as a printer or scanner, see this manual and the online manuals.

## Using the standard printer function and scanner function

- **Operation manual (for printer and scanner)**

This is an online manual that can be found in the "Software CD-ROM" that accompanies the machine.

This manual contains information necessary for using the machine as a printer and scanner, including printing by means of the standard printer driver, printing by means of the SPLC printer driver, scanning using Button Manager, troubleshooting, and key operator programs for the printer and scanner functions.

## Using the network printer function

- **Operation manual (for network printer)**

This is an online manual that can be found in the "Software CD-ROM (2)" that accompanies the network expansion kit.

This manual contains information necessary for using the machine as a printer, including printing condition settings, printing using the PCL5e and PCL6 printer drivers, and the PS printer driver, troubleshooting, and key operator programs for the printer and network functions.

## Using the network scanner function

- **Operation manual (for network scanner)**

This is an online manual that can be found in the "Software CD-ROM (2)" that accompanies the network expansion kit.

Read this manual for information on using Scan to FTP, Scan to E-mail, and other network scanner functions.

---

# ABOUT THE CD-ROMS

This product includes CD-ROMs that are provided standard with the machine and CD-ROMs that are provided with the optional network expansion kit (MX-NB10).



To view the manuals in PDF format, Adobe® Reader® or Acrobat® Reader® of Adobe Systems Incorporated is required. If neither program is installed on your computer, the programs can be downloaded from the following URL:

<http://www.adobe.com/>

## ■ CD-ROM provided standard with the machine (For Windows)

There are two CD-ROMs that are provided with the machine.

### Software CD-ROM

This CD-ROM contains a wizard-type installer for installation of the software below and the online manual "Operation Manual (for printer and scanner)".

For the procedure for installing the software, see page 6 of this manual.

#### MFP Driver

- **Printer driver**

The printer driver enables you to use the printer function of the machine.

- **Scanner driver**

The scanner driver allows you to use the scanning function of the machine with TWAIN-compliant and WIA-compliant applications.

#### Button Manager

Button Manager is a software utility that allows you to use the [SCAN] key on the machine to scan a document.

#### Sharpdesk

Sharpdesk is an integrated software environment that makes it easy to manage document and image files and launch applications.

#### PC-Fax driver

This enables you to send a fax from your computer to a fax machine via the machine (when the fax option is installed).

#### Online Manual

This is a manual in PDF format. To view the online manual "Operation Manual (for printer and scanner)" on the CD-ROM, specify the following path. (Note that "R" represents the letter of your CD-ROM drive.)

**R:\Manual\English\MX\_160\_200.pdf**

---

## ■ CD-ROMS in the network expansion kit (MX-NB10)

### "Software CD-ROM" (Disc 1)

The "Software CD-ROM" (Disc 1) contains the following software programs:

#### Software for Windows

- **Printer driver**

These allow the machine to be used as a printer.

- **PCL6 and PCL5e printer driver**

The machine supports the Hewlett-Packard PCL6 and PCL5e printer control languages. It is recommended that you use the PCL6 printer driver. If you have a problem printing from older software using the PCL6 printer driver, use the PCL5e printer driver.

- **PS printer driver**

The PS printer driver supports the PostScript 3 page description language developed by Adobe Systems Incorporated.

- **PPD driver**

The PPD driver enables the machine to use the standard Windows PS printer driver.

- **Printer Status Monitor**

This allows you to check the status of the network printer on your computer screen.

### "Software CD-ROM" (Disc 2)

The "Software CD-ROM" (Disc 2) contains the following software programs:

#### Software for Windows

- **PC-Fax driver**

This enables you to send a fax from your computer to a fax machine via the machine (when the fax option is installed).

- **Printer Administration Utility**

This allows the administrator to monitor the machine and configure machine settings from a computer. To install and use the Printer Administration Utility, see the Readme file and the manual in PDF format on the "Software CD-ROM" (Disc 2). The Readme file and manual are in the following folder on the CD-ROM. (Substitute the letter of your CD-ROM drive for "R" in the following path.)

**R:\Sadmin\Documents\English**

- **Online manuals**

These are manuals in PDF format.

To view the online manuals on the CD-ROM, specify the following paths. (Note that "R" represents the letter of your CD-ROM drive.)

- **For network printer: R:\Manual\English\OnlineManual\MX\_NB10\_Prn.pdf**

- **For network scanner: R:\Manual\English\OnlineManual\MX\_NB10\_Scn.pdf**

#### Software for Macintosh

- **PPD file**

This is the printer description file which enables the machine to be used as a PostScript 3 compatible printer. The PS3 expansion kit is required to use the machine in a Macintosh environment.

- **Online manuals**

These are manuals in PDF format.

To view the online manuals on the CD-ROM, double click the CD-ROM icon and then double-click in the following order:

- **For network printer: [Printer Manual] folder - [English] folder - [MX-NB10 Printer Manual] icon**

- **For network scanner: [Scanner Manual] folder - [English] folder - [MX-NB10 Scanner Manual] icon**

---

## **"Sharpdesk" CD-ROM**

Sharpdesk is an integrated software environment that makes it easy to manage document and image files, and launch applications.

For information on the "Sharpdesk" CD-ROM and how to install Sharpdesk, see the "Sharpdesk installation guide" that accompanies the network expansion kit.

### **Sharpdesk (Desktop Document Management Software)**

Sharpdesk is used to manage images scanned from the machine and files created in various software programs.

### **Network Scanner Tool**

This is a utility that helps you use Scan to Desktop. The utility allows you to configure settings to receive scanned images from the machine to your computer. You can have Sharpdesk launch automatically when your computer receives a scanned image from the machine.

### **SHARP TWAIN AR/DM**

This is used to acquire black and white images from a TWAIN interface into TWAIN-compliant software applications.

---

---

# CONTENTS

INTRODUCTION .....	1
● ABOUT THE CD-ROMS .....	2

## **1** INSTALLING THE SOFTWARE (THAT ACCOMPANIES THE MACHINE)

BEFORE INSTALLATION .....	6
● HARDWARE AND SOFTWARE REQUIREMENTS .....	6
INSTALLING THE SOFTWARE .....	6
● USING THE MACHINE AS A SHARED PRINTER .....	10
SETTING UP BUTTON MANAGER .....	11

## **2** INSTALLING THE SOFTWARE (FOR OPTIONS)

### SETUP IN A WINDOWS ENVIRONMENT

HARDWARE AND SOFTWARE REQUIREMENTS .....	13
SETTING THE IP ADDRESS OF THE MACHINE .....	13
OPENING THE SOFTWARE SELECTION SCREEN (FOR ALL SOFTWARE) .....	14
INSTALLING THE PRINTER DRIVER / PC-FAX DRIVER .....	15
● USING THE MACHINE AS A SHARED PRINTER .....	20
INSTALLING THE PS DISPLAY FONTS .....	21
INSTALLING THE PRINTER STATUS MONITOR .....	22

### SETUP IN A MACINTOSH ENVIRONMENT

MAC OS X .....	23
MAC OS 9.0 - 9.2.2 .....	27

## **3** TROUBLESHOOTING

WHEN INSTALLATION WAS NOT SUCCESSFUL .....	29
REMOVING THE SOFTWARE .....	32
CONFIGURING THE PRINTER DRIVER (Windows environment) .....	33
CHECKING THE IP ADDRESS .....	36
HARDWARE AND SOFTWARE REQUIREMENTS .....	36
CONNECTING TO A COMPUTER .....	37

# 1

# INSTALLING THE SOFTWARE (THAT ACCOMPANIES THE MACHINE)

---

---

## BEFORE INSTALLATION

### HARDWARE AND SOFTWARE REQUIREMENTS

Before installing the software, see "HARDWARE AND SOFTWARE REQUIREMENTS" on page 36 to make sure your computer meets the hardware and software requirements.

---

---

## INSTALLING THE SOFTWARE

### Standard installation

The procedure for a standard installation of the software is explained below. Normally, it is recommended that you use the standard installation.



If the machine is used as a shared printer via a server and you only wish to install certain components, select "Custom installation". (Pages 8 to 9)

---

#### 1 Make sure that the USB cable is not connected to the machine.

If the cable is connected, a Plug and Play window will appear. If this happens, click the [Cancel] button to close the window and disconnect the cable.



The cable will be connected in step 9.

---

#### 2 Insert the "Software CD-ROM (1)" that accompanies the machine into your computer's CD-ROM drive.

---

#### 3 Click the "Start" button, click "Computer", and then double-click the CD-ROM icon ( ).

- In Windows XP, click the "start" button, click "My Computer", and then double-click the CD-ROM icon.
- In Windows 2000, double-click "My Computer", and then double-click the CD-ROM icon.

---

#### 4 Double-click the [Setup] icon ( ).



If the language selection screen appears after you double click the [Setup] icon, select the language that you wish to use and click the [Next] button. (Normally the correct language is selected automatically.)

---

#### 5 The "SOFTWARE LICENSE" window will appear. Make sure that you understand the contents of the license agreement and then click the [Yes] button.

---

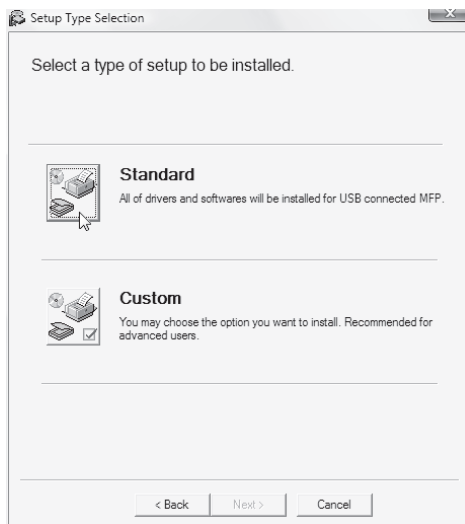
#### 6 Read the message in the "Welcome" window and then click the [Next] button.



**7 Click the [Standard] button.**

After the "Integrated Installer is preparing..." message appears, the software components below will be automatically installed. Follow the on-screen instructions.

- MFP Driver
- Button Manager
- Sharpdesk



**8 When installing is finished, click the "Close" button.**

**! Caution**

- If you are using Windows Vista and a security warning window appears, be sure to click "Install this driver software anyway".
- If you are running Windows 2000/XP and a warning message appears regarding the Windows logo test or digital signature, be sure to click "Continue Anyway" or "Yes".

A message will appear instructing you to connect the machine to your computer. Click the "OK" button.

**Note**

After the installation, a message prompting you to restart your computer may appear. In this case, click the "Yes" button to restart your computer.

**9 Make sure that the power of the machine is turned on, and then connect the USB cable (p.37).**

Windows will detect the machine and a Plug and Play window will appear.

**10 Follow the instructions in the Plug and Play window to install the driver.**

Follow the on-screen instructions.

**! Caution**

- If you are using Windows Vista and a security warning window appears, be sure to click "Install this driver software anyway".
- If you are running Windows 2000/XP and a warning message appears regarding the Windows logo test or digital signature, be sure to click "Continue Anyway" or "Yes".

**This completes the installation.**

- After installing the MFP Driver, see "CONFIGURING THE PRINTER DRIVER (Windows environment)" (page 33) to configure the printer driver settings.
- After installing Button Manager, see "SETTING UP BUTTON MANAGER" (page 11) to set up Button Manager.

1

## Custom installation

If the machine is used as a shared printer via a server or you only wish to install required software components, select "Custom installation".



- The PC-Fax driver uses the printer driver port. Before installing the PC-Fax driver, be sure to install the MFP driver (printer/scanner).
- To install this software, you must have administrator's rights.

### 1 Make sure that the USB cable is not connected to the machine and your computer.

If the cable is connected, a Plug and Play window will appear. If this happens, click the [Cancel] button to close the window and disconnect the cable.



The cable will be connected in step 14.

### 2 Insert the "Software CD-ROM (1)" that accompanies the machine into your computer's CD-ROM drive.

### 3 Click the "Start" button, click "Computer", and then double-click the CD-ROM icon ( ).

- In Windows XP, click the "start" button, click "My Computer", and then double-click the CD-ROM icon.
- In Windows 2000, double-click "My Computer", and then double-click the CD-ROM icon.

### 4 Double-click the [Setup] icon ( ).



If the language selection screen appears after you double click the [Setup] icon, select the language that you wish to use and click the [Next] button. (Normally the correct language is selected automatically.)

### 5 The "SOFTWARE LICENSE" window will appear. Make sure that you understand the contents of the license agreement and then click the [Yes] button.

### 6 Read the message in the "Welcome" window and then click the [Next] button.

### 7 Click the [Custom] button.



### 8 If you wish to install the MFP driver, click the [MFP Driver (Printer/Scanner)] button.

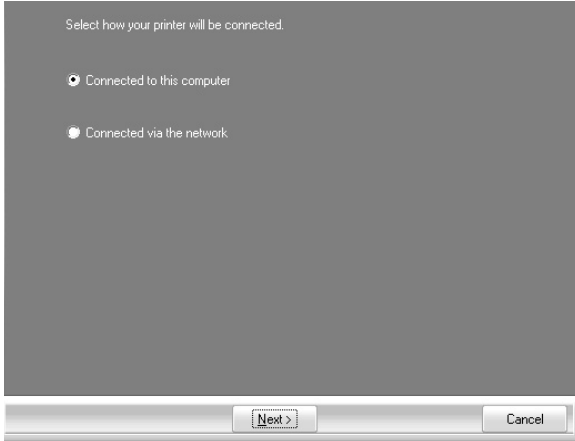
To view information on the software, click the [Display Readme] button.



**9 The files required for installation of the MFP driver are copied (if "MFP Driver" was selected in Step 8).**

Follow the on-screen instructions.

**When you are asked how the printer is connected, select [Connected to this computer] and click the [Next] button.**



**! Caution**

- If you are using Windows Vista and a security warning window appears, be sure to click "Install this driver software anyway".
- If you are running Windows 2000/XP and a warning message appears regarding the Windows logo test or digital signature, be sure to click "Continue Anyway" or "Yes".

When "The installation of the SHARP software is complete" appears, click the [OK] button.

**10 If you wish to install Button Manager, Sharpdesk, or the PC-Fax driver, click the [Utility Software] button in step 8.**

**11 Click the [Button Manager] button, the [Sharpdesk] button, or the [PC-Fax Driver] button.**

In the port selection screen that appears when the PC-Fax driver is being installed, select the same port as the MFP driver that is already installed.

**Note**

When a message appears prompting you to connect the USB cable, click the [OK] button.

**12 When installing is finished, click the "Close" button.**

**! Caution**

- If you are using Windows Vista and a security warning window appears, be sure to click "Install this driver software anyway".
- If you are running Windows 2000/XP and a warning message appears regarding the Windows logo test or digital signature, be sure to click "Continue Anyway" or "Yes".

A message will appear instructing you to connect the machine to your computer. Click the "OK" button.

**Note**

After the installation, a message prompting you to restart your computer may appear. In this case, click the "Yes" button to restart your computer.

**13 Make sure that the power of the machine is turned on, and then connect the USB cable (p.37).**

Windows will detect the machine and a Plug and Play window will appear.

**14 Follow the instructions in the Plug and Play window to install the driver.**

Follow the on-screen instructions.

**! Caution**

- If you are using Windows Vista and a security warning window appears, be sure to click "Install this driver software anyway".
- If you are running Windows 2000/XP and a warning message appears regarding the Windows logo test or digital signature, be sure to click "Continue Anyway" or "Yes".

**This completes the installation.**

- If you installed the MFP Driver, see "CONFIGURING THE PRINTER DRIVER (Windows environment)" (page 33) to configure the printer driver settings.
- If you installed Button Manager, see "SETTING UP BUTTON MANAGER" (page 11) to set up Button Manager.

# USING THE MACHINE AS A SHARED PRINTER

If the machine will be used as a shared printer on a Windows network, follow these steps to install the printer driver in the client computer.

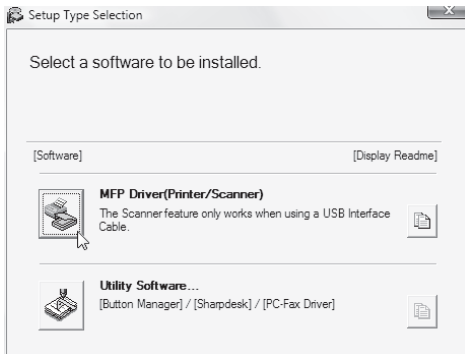


To configure the appropriate settings in the print server, see the operation manual or help file of your operating system.

**1** Perform steps 2 through 6 in "INSTALLING THE SOFTWARE" (p.6).

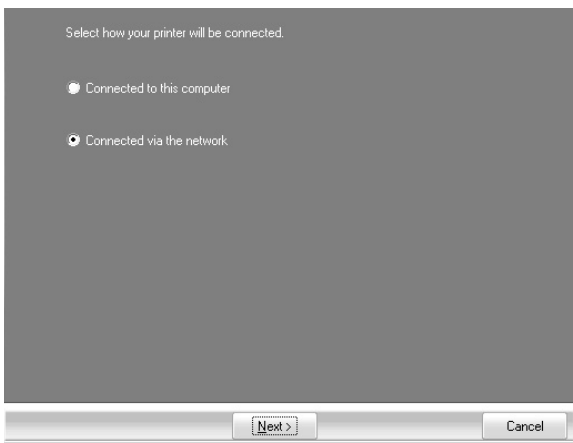
**2** Click the "Custom" button.

**3** Click the "MFP Driver" button.



Click the "Display Readme" button to show information on packages that are selected.

**4** Select "Connected via the network" and click the "Next" button.



**5** Select the printer name (configured as a shared printer on a print server) from the list.

In Windows 2000/XP, you can also click the "Add Network Port" button displayed below the list and select the printer to be shared by browsing the network in the window that appears.

**6** Click the "Next" button.

Follow the on-screen instructions.



If the shared printer does not appear in the list, check the settings on the print server.



- If you are using Windows Vista and a security warning window appears, be sure to click "Install this driver software anyway".
- If you are running Windows 2000/XP and a warning message appears regarding the Windows logo test or digital signature, be sure to click "Continue Anyway" or "Yes".

**7** You will return to the window of step 3. Click the "Close" button.



After the installation, a message prompting you to restart your computer may appear. In this case, click the "Yes" button to restart your computer.

This completes the installation of the software.

# SETTING UP BUTTON MANAGER

Button Manager is a software program that works with the scanner driver to enable scanning from the machine. To scan using the machine, Button Manager must be linked with the destination that appears in the display. Follow the steps below to link Button Manager to scanner events.

## Windows XP/Vista

- 1 Click the "Start" button, click "Control Panel", click "Hardware and Sound", and then click "Scanners and Cameras".**

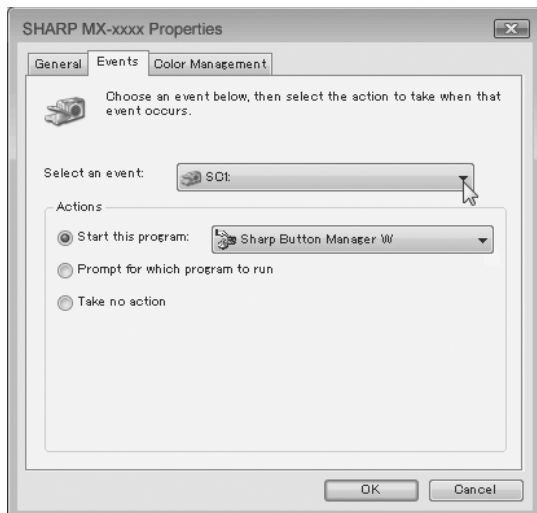
In Windows XP, click the "start" button, select "Control Panel" and click "Printers and Other Hardware", and then click "Scanners and Cameras".

- 2 Click the "SHARP MX-xxxx" icon and select "Properties".**

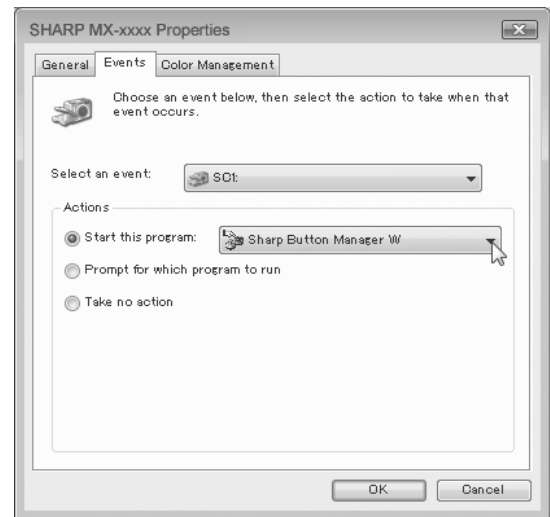
In Windows XP, select "Properties" from the "File" menu.

- 3 In the "Properties" screen, click the "Events" tab.**

- 4 Select "SC1:" from the "Select an event" pull-down menu.**



- 5 Select "Start this program" and then select "Sharp Button Manager W" from the pull-down menu.**



- 6 Repeat Steps 4 and 5 to link Button Manager to "SC2:" through "SC6:".**

Select "SC2:" from the "Select an event" pull-down menu. Select "Start this program", select "Sharp Button Manager W" from the pull-down menu. Do the same for each ScanMenu through "SC6:".

- 7 Click the "OK" button.**

Button Manager is now linked to the machine scan destinations SC1: to SC6:.

The scan settings for each of scan destinations SC1: through SC6: can be changed with the setting window of Button Manager.

For the factory default settings for destinations SC1: to SC6: and the procedures for configuring Button Manager settings, see "BUTTON MANAGER SETTINGS" in "Operation Manual (for printer and scanner)" in the "Software CD-ROM" that accompanies the machine.

## Windows 2000

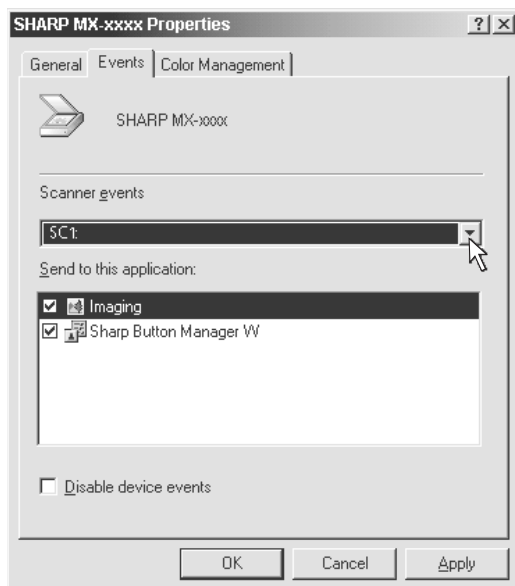
**1** Click the "Start" button, select "Settings", and then click "Control Panel".

**2** Double-click the "Scanners and Cameras" icon.

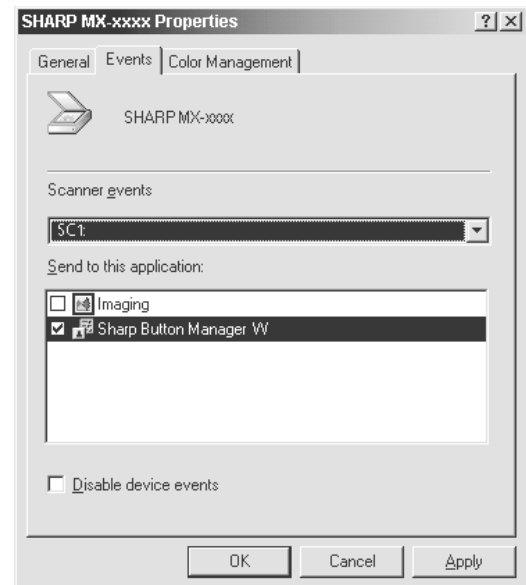
**3** Select "SHARP MX-xxxx" and click the "Properties" button.

**4** In the "Properties" screen, click the "Events" tab.

**5** Select "SC1:" from the "Scanner events" pull-down menu.



**6** Select "Sharp Button Manager W" in "Send to this application".



**Note** If other applications are shown, deselect the checkboxes for the other applications and leave only the Button Manager checkbox selected.

**7** Click the "Apply" button.

**8** Repeat Steps 5 through 7 to link Button Manager to "SC2:" through "SC6:".

Select "SC2:" from the "Scanner events" pull-down menu. Select "Sharp Button Manager W" in "Send to this application" and click the "Apply" button. Do the same for each ScanMenu through "SC6:".

When the settings have been completed, click the "OK" button to close the screen.

Button Manager is now linked to the machine scan destinations SC1: to SC6:.

The scan settings for each of scan destinations SC1: through SC6: can be changed with the setting window of Button Manager.

For the factory default settings for destinations SC1: to SC6: and the procedures for configuring Button Manager settings, see "BUTTON MANAGER SETTINGS" in "Operation Manual (for printer and scanner)" in the "Software CD-ROM" that accompanies the machine.

# 2

## INSTALLING THE SOFTWARE (FOR OPTIONS)

The procedures for installing the software when the machine is used as a network printer using the optional network expansion kit (MX-NB10) are explained in this chapter.

### SETUP IN A WINDOWS ENVIRONMENT

---

---

## HARDWARE AND SOFTWARE REQUIREMENTS

Before installing the software, see "HARDWARE AND SOFTWARE REQUIREMENTS" on page 36 to make sure your computer meets the hardware and software requirements.

---

---

## SETTING THE IP ADDRESS OF THE MACHINE

Before installing the printer driver, be sure to set the IP address of the machine as explained in "System Settings" in the "Network Printer" manual on the CD-ROM. Consult your network administrator for the correct IP address, subnet mask, and default gateway to be entered. **If a DHCP server will automatically assign an IP address to the machine, the following procedure is not necessary.** (To check the IP address assigned to the machine by DHCP, see "CHECKING THE IP ADDRESS" (page 36).)



**If the machine is used in a DHCP environment, the machine's IP address may change automatically. If this happens, printing will no longer be possible. In this event, use a WINS server or do not use the machine in a DHCP environment.**

# OPENING THE SOFTWARE SELECTION SCREEN (FOR ALL SOFTWARE)

## 1 Insert the "Software CD-ROM" into your computer's CD-ROM drive.

- If you are installing the printer driver or printer status monitor, insert the "Software CD-ROM" that shows "Disc 1" on the front of the CD-ROM.
- If you are installing the PC-Fax driver or scanner driver, insert the "Software CD-ROM" that shows "Disc 2" on the front of the CD-ROM.

## 2 Click the [Start] button ( ), click [Computer], and then double-click the [CD-ROM] icon ( ).

- In Windows XP/Server 2003, click the [start] button, click [My Computer], and then double-click the [CD-ROM] icon.
- In Windows 2000, double-click [My Computer] and then double-click the [CD-ROM] icon.

## 3 Double-click the [Setup] icon ( ).



In Windows Vista/Server 2008, if a message screen appears asking you for confirmation, click [Allow].

## 4 The "SOFTWARE LICENSE" window will appear. Make sure that you understand the contents of the license agreement and then click the [Yes] button.

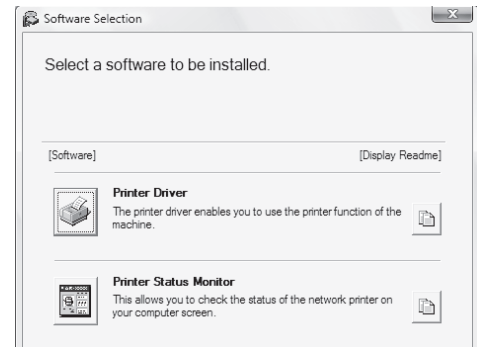


You can show the "SOFTWARE LICENSE" in a different language by selecting the desired language from the language menu. To install the software in the selected language, continue the installation with that language selected.

## 5 Read the message in the "Welcome" window and then click the [Next] button.

## 6 The software selection screen appears.

Before installing the software, be sure to click the [Display Readme] button and view the detailed information on the software.



\* The above screen appears when using the "Disc 1" CD-ROM.

For the steps that follow, see the appropriate page below for the software that you are installing.

### INSTALLING THE PRINTER DRIVER / PC-FAX DRIVER

- **Standard installation:** page 15
- **Installation by specifying the machine's address:** page 18
- **USING THE MACHINE AS A SHARED PRINTER:** page 20

### INSTALLING THE PRINTER STATUS MONITOR:

page 22



# INSTALLING THE PRINTER DRIVER / PC-FAX DRIVER

This section explains how to install the printer driver and the PC-Fax driver when the machine is connected to a Windows network (TCP/IP network).

**Supported operating systems: Windows 2000\*/XP\*/Server 2003\*/Vista\*/Server 2008\***

\* Administrator's rights are required to install the software.



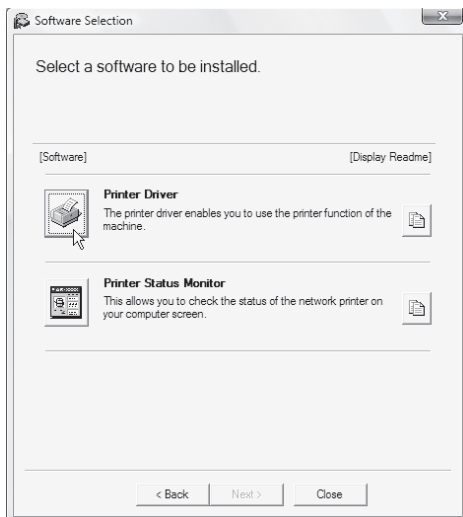
- The PS3 expansion kit is required to use the PS printer driver or the PPD driver.
- The installation procedure in this section is for both the printer driver and the PC-Fax driver, although the explanations are centred on the printer driver.

## ► Standard installation

When the software selection screen appears in step 6 of "OPENING THE SOFTWARE SELECTION SCREEN (FOR ALL SOFTWARE)" (page 14), perform the steps below.

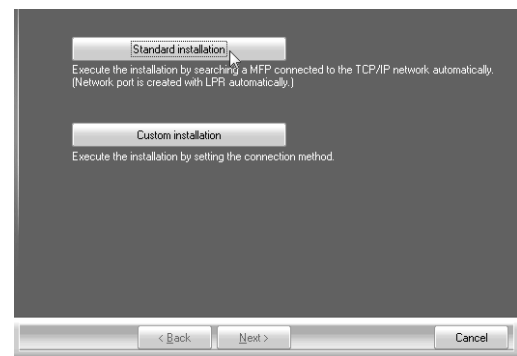
### 1 Click the [Printer Driver] button.

To install the PC-Fax driver, click the [PC-Fax Driver] button on the "Disc 2" CD-ROM.



\* The above screen appears when using the "Disc 1" CD-ROM.

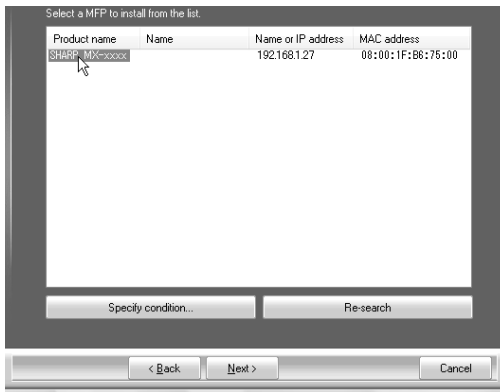
### 2 Click the [Standard installation] button.



When [Custom installation] is selected, you can change any of the items below. When [Standard installation] is selected, the installation will take place as indicated below.

- Machine connection method: LPR Direct Print (Auto Search)
  - Set as default printer: Yes (excluding the PC-Fax driver)
  - Printer driver name: Cannot be changed
  - PCL printer display fonts: Installed
- If you selected [Custom installation], select [LPR Direct Print (Auto Search)] and click the [Next] button.
- If you selected other than [LPR Direct Print (Auto Search)], see the following pages:
- LPR Direct Print (Specify Address): page 18
  - Shared printer: page 20

**3 Printers connected to the network are detected. Select the machine and click the [Next] button.**

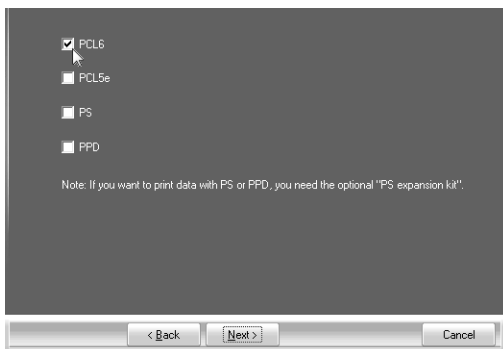


- If the machine is not found, make sure that the machine is powered on and that the machine is connected to the network, and then click the [Re-search] button.
- You can also click the [Specify condition] button and search for the machine by entering the machine's name (host name) or IP address.
  - ☛ CHECKING THE IP ADDRESS (page 36)

**4 A confirmation window appears. Check the contents and then click the [Next] button.**

**5 When the printer driver selection window appears, select the printer driver to be installed and click the [Next] button.**

Click the checkbox of the printer driver to be installed so that a checkmark (☑) appears.



- When the PC-Fax driver is being installed, this screen does not appear. Go to the next step.
- The PS3 expansion kit is required to use the PS printer driver or the PPD driver.

**6 When you are asked whether or not you want the printer to be your default printer, make a selection and click the [Next] button.**

If you are installing multiple drivers, select the printer driver to be used as the default printer. If you do not wish to set one of the printer drivers as the default printer, select [No].



If you clicked the [Custom installation] button in step 2, the following windows will appear.

- **Printer name window**  
If you wish to change the printer name, enter the desired name and click the [Next] button.
- **Window confirming installation of the display fonts**  
To install the display fonts for the PCL printer driver, select [Yes] and click the [Next] button.
  - When the PC-Fax driver is being installed, this screen does not appear. Go to the next step.
  - If you are not installing the PCL printer driver (you are installing the PS printer driver or the PPD driver), select [No] and click the [Next] button.

**7 Follow the on-screen instructions.**

Read the message in the window that appears and click the [Next] button. Installation begins.



- **If you are using Windows Vista/Server 2008**  
If a security warning window appears, be sure to click [Install this driver software anyway].
- **If you are using Windows 2000/XP/Server 2003**  
If a warning message regarding the Windows logo test or digital signature appears, be sure to click the [Continue Anyway] or [Yes] button.

**8 When the installation completed screen appears, click the [OK] button.**

## 9 Click the [Close] button in the window of step 1.



After the installation, a message prompting you to restart your computer may appear. If this message appears, click the [Yes] button to restart your computer.

### This completes the installation.

- After installation, see "CONFIGURING THE PRINTER DRIVER FOR THE OPTIONS INSTALLED ON THE MACHINE" (page 33) to configure the printer driver settings.
- If you installed the PS printer driver or the PPD driver, the PS display fonts can be installed from the "PRINTER UTILITIES" CD-ROM that accompanies the PS3 expansion kit. See "INSTALLING THE PS DISPLAY FONTS" (page 21).
- If you are using the machine as a shared printer, see "USING THE MACHINE AS A SHARED PRINTER" (page 20) to install the printer driver on each of the client computers.

## ► Installation by specifying the machine's address

When the machine cannot be found because it is not powered on or otherwise, installation is possible by entering the name (host name) or IP address of the machine.

When the software selection screen appears in step 6 of "OPENING THE SOFTWARE SELECTION SCREEN (FOR ALL SOFTWARE)" (page 14), perform the steps below.

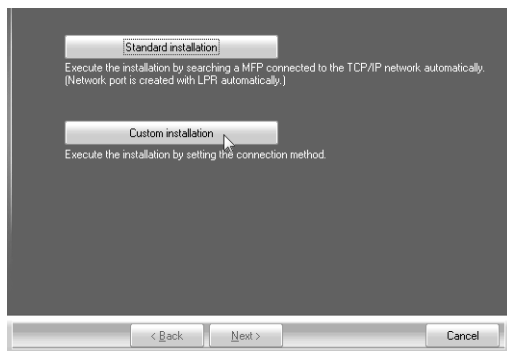
### 1 Click the [Printer Driver] button.

To install the PC-Fax driver, click the [PC-Fax Driver] button on the "Disc 2" CD-ROM.

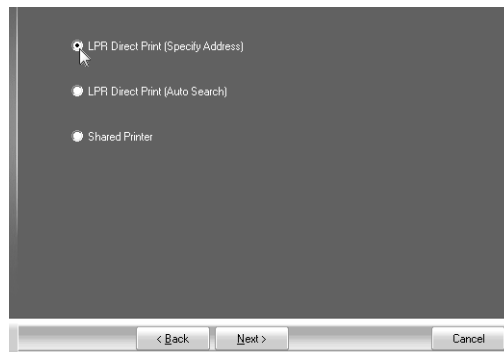


\* The above screen appears when using the "Disc 1" CD-ROM.

### 2 Click the [Custom installation] button.

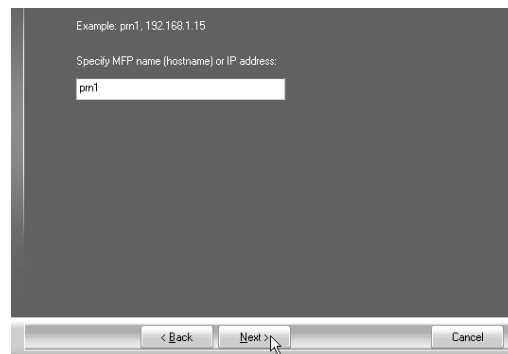


### 3 When you are asked how the printer is connected, select [LPR Direct Print (Specify Address)] and click the [Next] button.



### 4 Enter the name (host name) or IP address of the machine and click the [Next] button.

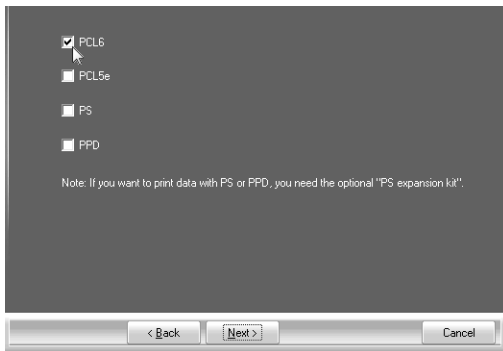
☞ CHECKING THE IP ADDRESS (page 36)



**5** When the model selection window appears, select the model name of your machine and click the [Next] button.

**6** When the printer driver selection window appears, select the printer driver to be installed and click the [Next] button.

Click the checkbox of the printer driver to be installed so that a checkmark () appears.



- When the PC-Fax driver is being installed, this screen does not appear. Go to the next step.
- The PS3 expansion kit is required to use the PS printer driver or the PPD driver.

**7** Select whether or not you wish the printer to be your default printer and click the [Next] button.

If you are installing multiple drivers, select the printer driver to be used as the default printer. If you do not wish to set one of the printer drivers as the default printer, select [No].

**8** When the printer name window appears, click the [Next] button.

If you wish to change the printer name, enter the desired name.

**9** When you are asked if you wish to install the display fonts, select an answer and click the [Next] button.

- When the PC-Fax driver is being installed, this screen does not appear. Go to the next step.
- If you are not installing the PCL printer driver (you are installing the PS printer driver or the PPD driver), select [No] and click the [Next] button.

**10** Follow the on-screen instructions.

Read the message in the window that appears and click the [Next] button. Installation begins.



- **If you are using Windows Vista/Server 2008**  
If a security warning window appears, be sure to click [Install this driver software anyway].
- **If you are using Windows 2000/XP/Server 2003**  
If a warning message regarding the Windows logo test or digital signature appears, be sure to click the [Continue Anyway] or [Yes] button.

**11** When the installation completed screen appears, click the [OK] button.

**12** Click the [Close] button in the window of step 1.



After the installation, a message prompting you to restart your computer may appear. If this message appears, click the [Yes] button to restart your computer.

**This completes the installation.**

- After installation, see "CONFIGURING THE PRINTER DRIVER FOR THE OPTIONS INSTALLED ON THE MACHINE" (page 33) to configure the printer driver settings.
- If you installed the PS printer driver or the PPD driver, the PS display fonts can be installed from the "PRINTER UTILITIES" CD-ROM that accompanies the PS3 expansion kit. See "INSTALLING THE PS DISPLAY FONTS" (page 21).

# USING THE MACHINE AS A SHARED PRINTER

If you are going to use the machine as a shared printer on a Windows network with the printer driver or the PC-Fax driver installed on a print server, follow the steps below to install the printer driver or the PC-Fax driver on the client computers.

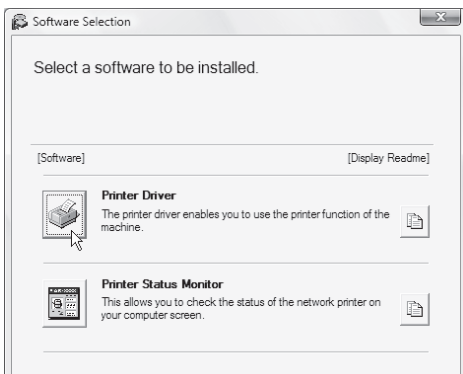


- Ask your network administrator for the server name and printer name of the machine on the network.
- For the procedure for configuring settings on the print server, see the operation manual or the Help file of the operating system. The "print server" explained here is a computer that is connected directly to the machine, and "clients" are other computers connected to the same network as the print server.
- Install the same printer driver on client computers as the printer driver that is installed on the print server.

When the software selection screen appears in step 6 of "OPENING THE SOFTWARE SELECTION SCREEN (FOR ALL SOFTWARE)" (page 14), perform the steps below.

## 1 Click the [Printer Driver] button.

To install the PC-Fax driver, click the [PC-Fax Driver] button on the "Disc 2" CD-ROM.



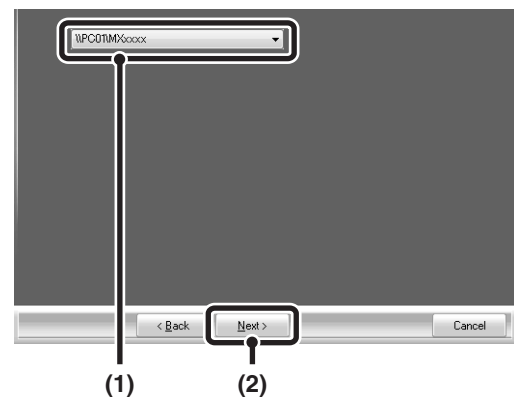
\* The above screen appears when using the "Disc 1" CD-ROM.

## 2 Click the [Custom installation] button.

## 3 Select [Shared Printer] and click the [Next] button.



## 4 Select the printer name (configured as a shared printer).



(1) Select the printer name (configured as a shared printer on a print server) from the list.

If you are using Windows 2000/XP/Server 2003, you can also click the [Add Network Port] button displayed below the list and select the printer to be shared by browsing the network in the window that appears.

(2) Click the [Next] button.



If the shared printer does not appear in the list, check the settings on the print server.

## 5 Perform steps 5 through 12 on page 19 to continue the installation.

In the printer driver selection screen, be sure to select the same type of printer driver as the printer driver installed on the print server.



### This completes the installation.

If you installed the PS printer driver or the PPD driver, the PS display fonts can be installed from the "PRINTER UTILITIES" CD-ROM that accompanies the PS3 expansion kit. See "INSTALLING THE PS DISPLAY FONTS" (page 21).

# INSTALLING THE PS DISPLAY FONTS

Fonts that can be used by the PS printer driver are contained on the "PRINTER UTILITIES" CD-ROM that accompanies the PS3 expansion kit. Install these fonts as needed for the PS printer driver.

**1** Insert the "PRINTER UTILITIES" CD-ROM that accompanies the PS3 expansion kit into your computer's CD-ROM drive.

**2** Click the [Start] button (  ), click [Computer], and then double-click the [CD-ROM] icon (  ).

In Windows XP/Server 2003, click the [start] button, click [My Computer], and then double-click the [CD-ROM] icon.

**3** Double-click the [Setup] icon (  ).



In Windows Vista/Server 2008, if a message screen appears asking you for confirmation, click [Allow].

**4** The "SOFTWARE LICENSE" window will appear. Make sure that you understand the contents of the license agreement and then click the [Yes] button.



You can show the "SOFTWARE LICENSE" in a different language by selecting the desired language from the language menu. To install the software in the selected language, continue the installation with that language selected.

**5** Read the message in the "Welcome" window and then click the [Next] button.

**6** Click the [PS Display Font] button.



**7** Follow the on-screen instructions.

**8** Click the [Close] button in the screen of step 6.

2

---

---

# INSTALLING THE PRINTER STATUS MONITOR

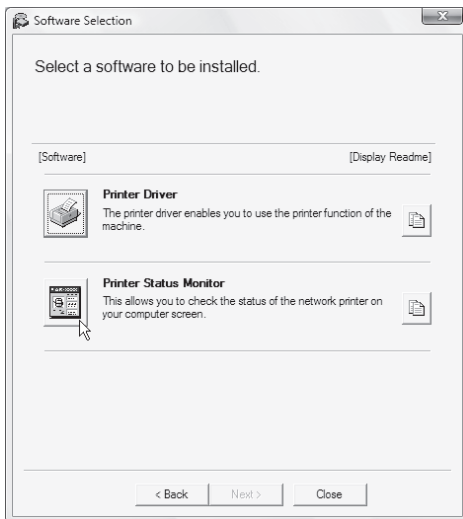
Printer Status Monitor is a printer utility that allows general users to check the current status of the machine on their computer screen, such as whether or not the machine is ready to print. The Printer Status Monitor shows error information such as paper misfeeds, printer configuration information (whether or not a finisher is installed, etc.) as an image, the paper sizes that can be used, and the amount of paper remaining.

**Supported operating systems: Windows 2000\*/XP\*/Server 2003\*/Vista\*/Server 2008\***

\* Administrator's rights are required to install the software.

When the software selection screen appears in step 6 of "OPENING THE SOFTWARE SELECTION SCREEN (FOR ALL SOFTWARE)" (page 14), perform the steps below.

## 1 Click the [Printer Status Monitor] button.



## 2 Follow the on-screen instructions.

**This completes the installation.**

For the procedures for using the Printer Status Monitor, see the Help file. Follow these steps to view the Help file: Click the Windows [start] button, select [All Programs] ([Programs] in Windows 2000), select [SHARP Printer Status Monitor] and then select [Help].

## 3 When the installation completed screen appears, click the [Finish] button.

To have the Printer Status Monitor start automatically when your computer is started, select the [Add this program to your Startup folder] checkbox  and click the [Finish] button.

## 4 Click the [Close] button in the window of step 1.



After the installation, a message prompting you to restart your computer may appear. If this message appears, click the [Yes] button to restart your computer.



# SETUP IN A MACINTOSH ENVIRONMENT

This chapter explains how to install the PPD file to enable printing from a Macintosh and how to configure the printer driver settings.

- ☞ MAC OS X: this page  
(v10.2.8, v10.3.9, v10.4.11, v10.5 - 10.5.6)
- ☞ MAC OS 9.0 - 9.2.2: page 27

- The PS3 expansion kit is required to use the machine as a printer in a Macintosh environment. In addition, the machine must be connected to a network.
- The scanner driver and PC-Fax driver cannot be used in a Macintosh environment.

## MAC OS X



The explanations of screens and procedures are primarily for Mac OS X v10.4. The screens may vary in other versions of the operating system.

### 1 Insert the "Software CD-ROM" into your computer's CD-ROM drive.

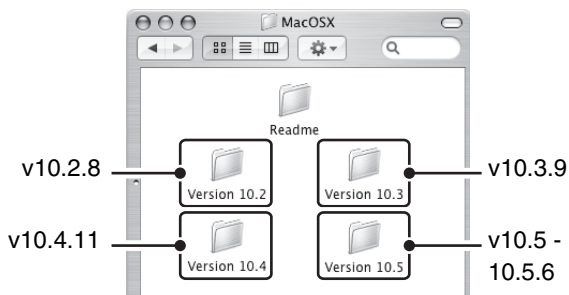
Insert the "Software CD-ROM" that shows "Disc 2" on the front of the CD-ROM.

### 2 Double-click the [CD-ROM] icon ( ) on the desktop.

### 3 Double-click the [MacOSX] folder.

Before installing the software, be sure to read "ReadMe First". "ReadMe First" is in the [English] folder in the [Readme] folder.

### 4 Double-click the folder corresponding to the versions of the operating system.



### 5 Double-click the [MX-B06] icon ( ).



If the "Authenticate" window appears in Mac OS X v10.2.8, enter the password and click the [OK] button.

### 6 Click the [Continue] button.



### 7 The License Agreement window will appear. Make sure that you understand the contents of the license agreement and then click the [Continue] button.

A message will appear asking you if you agree to the terms of the license. Click the [Agree] button.



If the license appears in the different language, change the language in the language menu.

**8 Select the hard drive where the PPD file will be installed and click the [Continue] button.**

Be sure to select the hard drive on which your operating system is installed.



**9 Click the [Install] button.**

Installation begins.



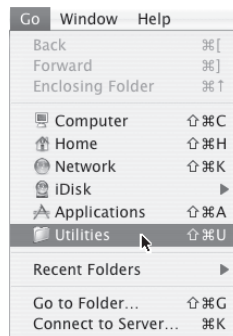
If the "Authenticate" window appears, enter the password and click the [OK] button.

**10 When the message "The software was successfully installed" appears in the installation window, click the [Close] button.**

This completes the installation of the software. Next, configure the printer driver settings.

**11 Select [Utilities] from the [Go] menu.**

- If you are using Mac OS X v10.5 to 10.5.6, click [System Preferences] in the Apple menu () and select [Print & Fax] (🖨️). When the screen for adding a printer appears, click the  button and go to step 14.
- If you are using Mac OS X v10.2.8, select [Applications] from the [Go] menu.



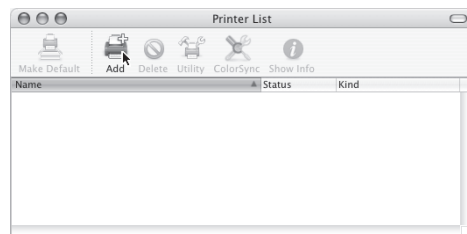
**12 Double-click the [Printer Setup Utility] icon (🖨️).**

If you are using Mac OS X v10.2.8, double-click the [Utilities] folder and then double-click the [Print Center] icon.



If this is the first time you are installing a printer driver on your computer, a confirmation message will appear. Click the [Add] button.

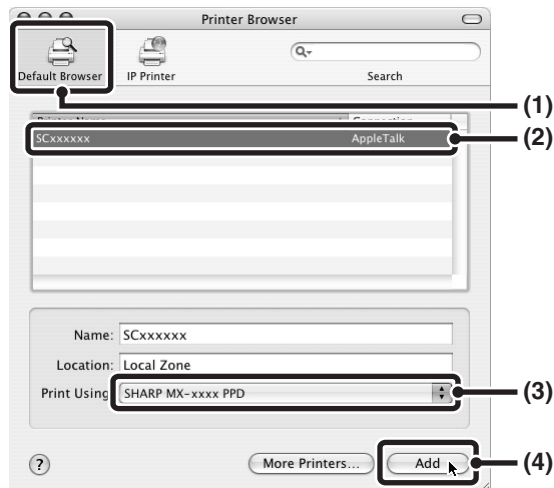
**13 Click [Add].**



## 14 Configure the printer driver.

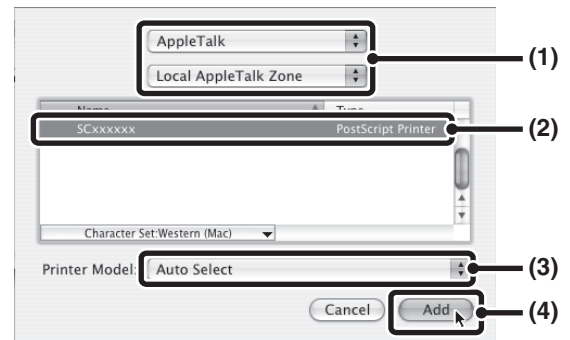
The procedure for configuring the printer driver varies depending on the operating system version. The procedure for versions 10.4.11 and 10.5 - 10.5.6 and the procedure for other versions are explained separately below.

### v10.4.11, v10.5 - 10.5.6



- (1) Click the [Default Browser] icon.  
If multiple AppleTalk zones are displayed, select the zone that includes the printer from the menu.  
If you are using Mac OS X v10.5 to 10.5.6, click the [Default] icon.
- (2) Click the machine's model name.  
The machine's model name usually appears as [SCxxxxxx]. ("xxxxxx" is a sequence of characters that varies depending on your model.)  
The PPD file of the machine is automatically selected.
- (3) Make sure that the PPD file of your model is selected.
- (4) Click the [Add] button.  
The PPD file of the machine is automatically selected and the peripheral devices installed on the machine are detected and automatically configured.

### v10.2.8, v10.3.9

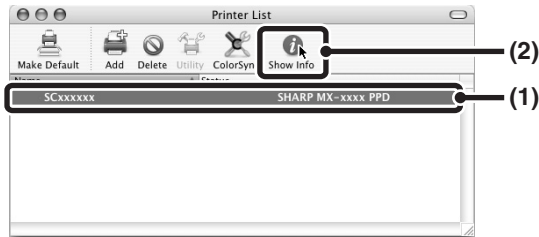


- (1) Select [AppleTalk].  
If multiple AppleTalk zones are displayed, select the zone that includes the printer from the menu.
- (2) Click the machine's model name.  
The machine's model name usually appears as [SCxxxxxx]. ("xxxxxx" is a sequence of characters that varies depending on your model.)
- (3) Select the PPD file of the machine.  
If you are using Mac OS X v10.3.9, select [Auto Select].  
If you are using Mac OS X v10.2.8, select [Sharp] and click the PPD file of your model.
- (4) Click the [Add] button.  
If you are using Mac OS X v10.3.9, the PPD file of the machine is automatically selected and the peripheral devices installed on the machine are detected and automatically configured.



The PPD file is installed in the following folders on the startup disk.  
[Library] - [Printers] - [PPDs] - [Contents] - [Resources] - [en.lproj]

## 15 Display printer information.



**(1) Click the machine's name.**

If you are using Mac OS X v10.5 to 10.5.6, click the [Options & Supplies] button, click the [Driver] tab and go to step 16.

**(2) Click [Show Info].**

If you are using Mac OS X v10.2.8, select [Show Info] from the [Printers] menu.

## 16 Select the machine configuration.

If you selected [Auto Select] in (3) of step 14, the machine configuration is detected and automatically configured. Check the configured settings to make sure they are correct.

**(1) Select [Installable Options].**

If you are using Mac OS X v10.5 to 10.5.6, it does not appear.

**(2) Select the options that are installed on the machine.**

**(3) Click the [Apply Changes] button.**

If you are using Mac OS X v10.5 to 10.5.6, click the [OK] button.

**(4) Click to close the window.**

**This completes the configuration of the printer driver.**

# MAC OS 9.0 - 9.2.2



If you are using Mac OS 9.0 to 9.2.2, make sure that "LaserWriter 8" has been installed and that the "LaserWriter 8" checkbox is selected  in "Extensions Manager" in "Control Panels". If not, install it from the system CD-ROM supplied with your Macintosh computer.

## 1 Insert the "Software CD-ROM" into your computer's CD-ROM drive.

Insert the "Software CD-ROM" that shows "Disc 2" on the front of the CD-ROM.

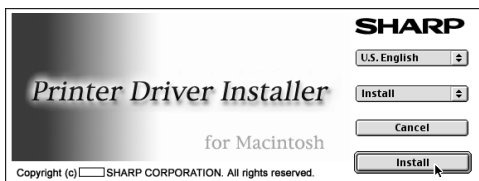
## 2 Double-click the [CD-ROM] icon ( ) on the desktop.

## 3 Double-click the [MacOS] folder.

Before installing the software, be sure to read "ReadMe First". "ReadMe First" is in the [US-English] folder ([English] folder in areas other than the U.S.) in the [Readme] folder.

## 4 Double-click the [Installer] icon ( ).

## 5 Click the [Install] button.



## 6 The License Agreement window will appear. Make sure that you understand the contents of the license agreement and then click the [Yes] button.

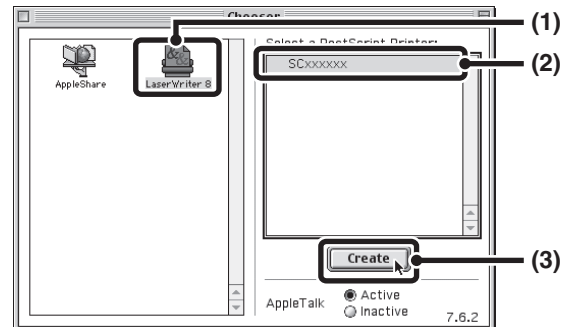
## 7 Read the message in the window that appears and click the [Continue] button.

Installation of the PPD file begins. After the installation, a message prompting you to restart your computer will appear. Click the [OK] button and restart your computer.

This completes the installation of the software. Next, configure the printer driver settings.

## 8 Select [Chooser] from the Apple Menu.

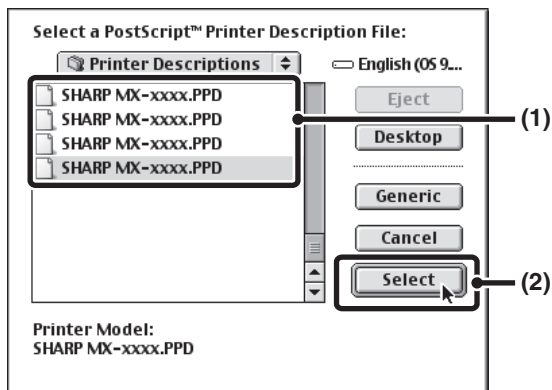
## 9 Create a printer.



- (1) Click the [LaserWriter 8] icon. If multiple AppleTalk zones are displayed, select the zone that includes the printer.
- (2) Click the machine's model name. The machine's model name usually appears as [SCxxxxxx]. ("xxxxxx" is a sequence of characters that varies depending on your model.)
- (3) Click the [Create] button.

2

**10 Select the PPD file.**



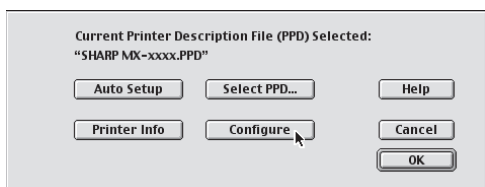
- (1) Click the PPD file for your model.
- (2) Click the [Select] button.



- If the above dialog box does not appear and you return to the "Chooser" dialog box, follow these steps to select the PPD file manually.
  - (1) Make sure that the machine is selected in the "Select a PostScript Printer" list, and then click the [Setup] button followed by the [Select PPD] button.
  - (2) Select the PPD file for your model and click the [Open] button.
  - (3) Click the [OK] button.
- The PPD file is installed in the [Printer Descriptions] folder in the [Extensions] folder.

**11 Make sure that the machine is selected in the "Select a PostScript Printer" list and then click the [Setup] button.**

**12 Click the [Configure] button.**



To automatically configure the settings based on the installed machine options that are detected, click the [Auto Setup] button.

**13 Select the machine configuration.**

- (1) Select the options that are installed on the machine.
- (2) Click the [OK] button.

**14 Click the [OK] button in the window of step 12 to close the window.**

**15 Click the close box (☐) to close the "Chooser".**

This completes the configuration of the printer driver.

**Installing the screen fonts**

The screen fonts for Mac OS 9.0 - 9.2.2 are contained in the [Font] folder of the "PRINTER UTILITIES" CD-ROM that accompanies the PS3 expansion kit. Copy the fonts that you wish to install to the [System Folder] of the startup disk.





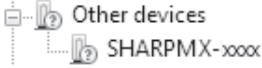
If you experience problems that may be due to the installed screen fonts, immediately delete the installed fonts from the system.

## WHEN INSTALLATION WAS NOT SUCCESSFUL

This section provides solutions to possible installation problems. See the following table of contents to locate the appropriate page for your question or problem.

- The software cannot be installed. . . . . 29
- The machine is not detected (when connected to a network). . . . . 29
- The plug and play screen does not appear (USB connection in Windows). . . . . 30
- The printer driver is not installed correctly by plug and play (USB connection in Windows). . . . . 30
- The printer driver cannot be installed (Windows 2000/XP/Server 2003) . . . . . 31

Problem	Point to check	Solution
<b>The software cannot be installed.</b>	Is there sufficient free space on your hard drive?	Delete any unneeded files and applications to increase free space on your hard drive.
	Are you using an operating system that is not supported?	Make sure that the software can run on your operating system. For detailed information on installation requirements for each software program in Windows, click the [Display Readme] button in the installer. In a Macintosh environment, this can be checked in "ReadMe First" in the [English] folder in the [Readme] folder of the "Software CD-ROM".
<b>The machine is not detected (when connected to a network).</b>	Is the IP address of the machine configured?	If the IP address of the machine is not configured, the machine will not be detected. Make sure that the IP address is configured correctly as explained in "System Settings" in the "Network Printer" manual on the CD-ROM.
	Is your computer connected to the same network as the machine?	Windows: If the machine and your computer are not connected to the same local area network, the machine will not be detected. If the two are connected to different sub-networks, click the [Specify condition] button and enter the machine's name (host name) or IP address to search for the machine. Macintosh: If multiple AppleTalk zones exist, select the zone to which the machine is connected from the menu.

Problem	Point to check	Solution
<p>The machine is not detected (when connected to a network).</p>	<p>Is your computer connected correctly to the machine?</p>	<p>Make sure that the cable is connected securely to the LAN connectors on your computer and the machine. Check the connections at the hub as well.</p> <p> Connecting to a network connector (When the network expansion kit is installed. ) (page 37)</p>
<p>The plug and play screen does not appear (USB connection in Windows).</p>	<p>Is the machine power on?</p>	<p>When a USB cable is connected, make sure the power of the machine is "ON" and then connect a USB cable to the machine.</p>
	<p>Can your computer use a USB connection?</p>	<p>Check your computer whether or not a USB interface can be used on the Device Manager in your computer. (For information on "Device Manager", see Help in Windows.)</p> <p>If USB can be used, your controller chipset type and root hub will appear in "Universal Serial Bus controllers" in "Device Manager". (The items that appear will vary depending on your computer.)</p>  <p>If these two items appear, USB should be useable. If a yellow exclamation point appears next to "Universal Serial Bus controllers" or the two items do not appear, refer to your computer manual or check with the manufacturer of your computer to enable USB and then reinstall the printer driver.</p>
<p>The printer driver is not installed correctly by plug and play (USB connection in Windows).</p>	<p>Did you connect the machine to your computer before installing the printer driver?</p>	<p>In Windows 2000/XP/Vista, if the machine was connected to your computer with a USB cable before the printer driver was installed from the installer, check if information on the unsuccessful installation remains in "Device Manager". (For information on "Device Manager", see Help in Windows.)</p> <p>If the model name of the machine appears in "Other devices" in "Device Manager", delete it, restart your computer, and install the printer driver again.</p> 



## ► The printer driver cannot be installed (Windows 2000/XP/Server 2003)

If the printer driver cannot be installed on Windows 2000/XP/Server 2003, follow the steps below to check your computer settings.

### 1 Click the [start] button and then click [Control Panel].

In Windows 2000, click the [Start] button, point to [Settings], and click [Control Panel].

### 2 Click [Performance and Maintenance] and then [System].

In Windows 2000, double-click the [System] icon.

### 3 Click the [Hardware] tab and then the [Driver Signing] button.

### 4 Check the settings in "What action do you want Windows to take?" ("File signature verification" in Windows 2000).

**3**

If [Block] is selected, the printer driver cannot be installed. Select [Warn] and install the printer driver again.

---

---

# REMOVING THE SOFTWARE

To remove the printer driver or software installed using the installer, follow the steps below.

## Windows

---

### 1 Click the [start] button and then click [Control Panel].

In Windows 2000, click the [Start] button, point to [Settings], and click [Control Panel].

---

### 2 Click [Uninstall a program].

- In Windows XP/Server 2003, click [Add or Remove Programs].
- In Windows 2000, double-click the [Add/Remove Programs] icon.

---

### 3 Select the program or driver that you wish to delete.

For more information, see the manual for the operating system or Help.

---

### 4 Restart your computer.

## Mac OS X

---

### 1 Delete the printer that uses the machine's PPD file from the printer list.

To show the printer list, see step 11 and 12 of "MAC OS X" (page 24).

---

### 2 Delete the PPD file.

The PPD file has been copied to the following folder on the startup disk.

[Library] - [Printers] - [PPDs] - [Contents] - [Resources] - [en.lproj]

Delete the PPD file of the machine from this folder.

---

### 3 Delete the installation information.

The installation information file has been copied to the following folder on the startup disk.

[Library] - [Receipts]

Delete the [MX-B06.pkg] file from this folder.

## Mac OS 9.0 - 9.2.2

After deleting the icon of the printer that uses the machine's PPD file from the desktop, follow the steps below.

---

### 1 Insert the "Software CD-ROM" into your CD-ROM drive.

Insert the "Software CD-ROM" that shows "Disc 2" on the front of the CD-ROM.

---

### 2 Double-click the [CD-ROM] icon ( ) on the desktop and double-click the [MacOS] folder.

---

### 3 Double-click the [Installer] icon ( ).

---

### 4 Select [Remove] in the Install menu and click the [Remove] button.


# CONFIGURING THE PRINTER DRIVER (Windows environment)

After installing the printer driver, you must configure the printer driver settings appropriately for the options that have been installed and the size and type of paper loaded in the machine. Follow the steps below to configure the printer driver.



If the PPD driver is installed, see "When the PPD driver is installed" (page 35).

## ► When the machine's standard printer driver, the PCL printer driver, or the PS printer driver is installed

**1** Click the [Start] button (  ), click [Control Panel], and then click [Printer].

- In Windows XP/Server 2003, click the [start] button and then click [Printers and Faxes].
- In Windows 2000, click the [Start] button, select [Settings], and then click [Printers].



If [Printers and Faxes] does not appear in the [start] menu in Windows XP, click the [start] button, click [Control Panel], click [Printers and Other Hardware], and then click [Printers and Faxes].

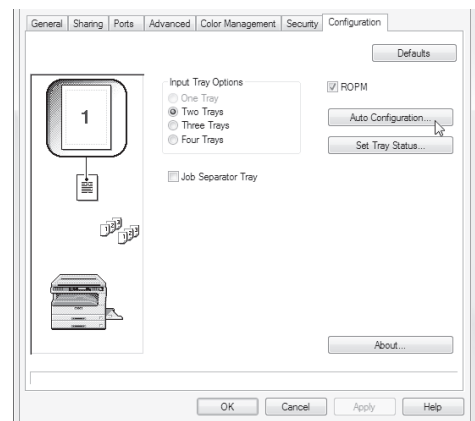
**2** Open the printer properties window.

- (1) Right-click the printer driver icon of the machine.
- (2) Select [Properties].

**3** Click the [Configuration] tab.

**4** Click the [Auto Configuration] button.

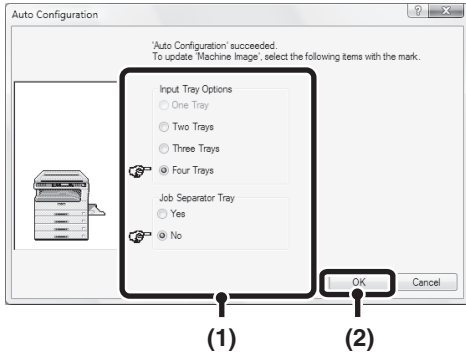
The settings are automatically configured based on the detected machine status.



3

## 5 Configure the image of the machine.

An image of the machine is formed in the printer driver configuration window based on the options that are installed.



(1) Select the options that are installed on the machine.

(2) Click the [OK] button.



To cancel the image settings, click the [Cancel] button.

## 6 Click the [OK] button in the printer properties window.



If automatic configuration fails, Click the [Set Tray Status] button and select the size of paper that is loaded in each tray.

- Select a tray in the "Paper source" menu, and select the size of paper loaded in that tray from the "Set Paper Size" menu.

## ► When the PPD driver is installed

### 1 Click the [Start] button ( ), click [Control Panel], and then click [Printer].

- In Windows XP/Server 2003, click the [start] button and then click [Printers and Faxes].
- In Windows 2000, click the [Start] button, select [Settings], and then click [Printers].



If [Printers and Faxes] does not appear in the [start] menu in Windows XP, click the [start] button, click [Control Panel], click [Printers and Other Hardware], and then click [Printers and Faxes].

### 2 Open the printer properties window.

- (1) Right-click the printer driver icon of the machine.
- (2) Select [Properties].

### 3 Configure the printer driver for the options installed on the machine.

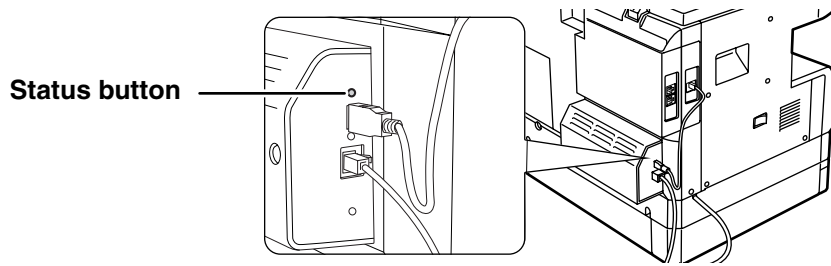
- (1) Click the [Device Settings] tab.
- (2) Configure each item based on the machine configuration.  
The items and the procedures for configuring the items vary depending on the operating system version.
- (3) Click the [OK] button.

**3**

# CHECKING THE IP ADDRESS

There are several settings where the IP address must be entered or checked.

To check the IP address of the machine, hold down the status button on the network expansion kit for at least 2 seconds to print out a Printer Setting List.



## HOW TO RESET THE NETWORK EXPANSION KIT

To reset the network expansion kit, power on the machine while holding down the status button on the network expansion kit.

After the network expansion kit is reset, network scanner destination information and scan settings will remain, however, the network settings and network printer settings will revert to the factory default settings.

# HARDWARE AND SOFTWARE REQUIREMENTS

Before installing the software from the CD-ROM that is provided standard with the machine or the CD-ROM that is provided with the optional network expansion kit (MX-NB10), make sure that your computer satisfies the following requirements.

	Windows (standard machine system)	Windows (options)	Macintosh (options)
Operating system	Windows 2000 Professional* <sup>1</sup> , Windows XP Professional* <sup>1</sup> , Windows XP Home Edition* <sup>1</sup> , Windows 2000 Server* <sup>1,2</sup> , Windows Server 2003* <sup>1,2</sup> , Windows Vista* <sup>1</sup> , Windows Server 2008* <sup>1,2</sup>		Mac OS 9.0 to 9.2.2, Mac OS X v10.2.8, Mac OS X v10.3.9, Mac OS X v10.4.11, Mac OS X v10.5 to 10.5.6
Computer type	IBM PC/AT compatible computer		An environment on which any of the operating systems listed above can fully operate (including Macintosh computers with an Intel processor).
	Equipped standard with a USB 2.0* <sup>3</sup> /1.1* <sup>4</sup> port	Equipped with a 10Base-T/100Base-TX LAN board	
Display	1024 x 768 dots resolution and 16-bit colour or higher is recommended.		
Other hardware requirements	An environment that allows any of the above operating systems to fully operate		

\*1 Administrator's rights are required to install the software.

\*2 Sharpdesk is not supported. The MFP driver, Button Manager, and other software on the "Software CD-ROM" that is provided standard with the machine are not supported.

\*3 The machine's USB 2.0 port will transfer data at the speed specified by the USB 2.0 (Hi-Speed) standard only if the Microsoft USB 2.0 driver is preinstalled in the computer, or if the USB 2.0 driver for Windows 2000 Professional/XP/Vista that Microsoft provides through "Windows Update" is installed.

\*4 Compatible with models preinstalled with Windows 2000 Professional, Windows XP Professional or Windows XP Home Edition or Windows Vista and which are equipped standard with a USB interface.

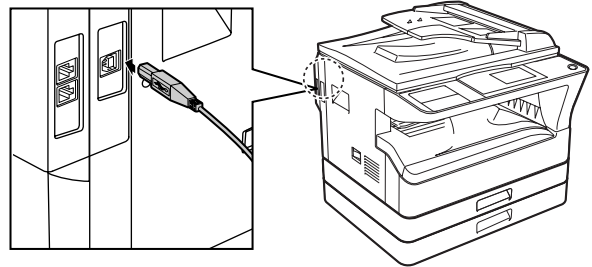
# CONNECTING TO A COMPUTER

## Connecting a usb cable

Please purchase a USB cable (shielded) that complies with the following standard.

The USB interface on the machine complies with the USB 2.0/1.1 standard.

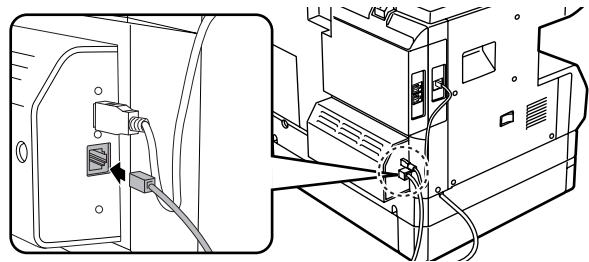
USB 2.0 port



- The machine's USB 2.0 port will transfer data at the speed specified by the USB 2.0 only if the Microsoft USB 2.0 driver is preinstalled in the computer, or if the USB 2.0 driver for Windows 2000 Professional/XP/Vista that Microsoft provides through "Windows Update" is installed.
- Even when the Microsoft USB 2.0 driver is used, it may not be possible to obtain full USB 2.0 speed if a PC card supporting USB 2.0 is used. To obtain the latest driver (which may enable a higher speed), contact the manufacturer of your PC card.
- The cable can also be inserted into a USB 1.1 port. However, performance will be the same as USB 1.1.

## Connecting to a network connector (When the network expansion kit is installed. )

Use a network cable that is shielded.



**SHARP**<sup>®</sup>  
SHARP CORPORATION

